















CLIENT

APP 044-20844 INC.  
141 S GRAND STREET  
SANTA ANA, CA 92705  
DATE: 03/20/22

PROJECT NAME  
VALLEY VIEW COLLEGE  
CHILD DEVELOPMENT CENTER BLDG 217E  
141 S GRAND STREET  
SANTA ANA, CA 92705

BUILDER

DESIGN CONSULTANT  
SULLMAN  
7515 Metropolitan Dr.  
San Diego, CA 92108  
T 619.284.7515  
F 619.284.5752  
www.sullman.com

DESIGN CONSULTANT  
**EPI**  
THE ENGINEERING PARTNERSHIP  
CONSULTING ENGINEERS  
1000 WALTON AVENUE, SUITE 200  
ANN ARBOR, MI 48106-1404  
EPI 03-18746E

REGISTRATION STAMPS

AGENCY APPROVAL

MARK	DATE	DESCRIPTION
DESIGNER PROJ. NO.		
DRAWN BY:		SULLMAN
CHECKED BY:		SULLMAN
SCALE:		AS SHOWN
SUBMITTAL:		03/20/22
KEY PLAN		

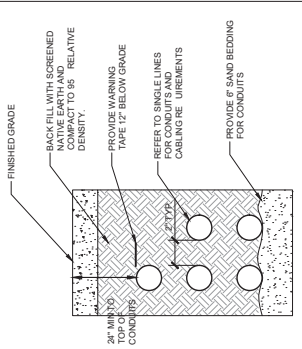
SHEET TITLE  
ELECTRICAL  
DETAILS

SHEET NUMBER  
E4.0

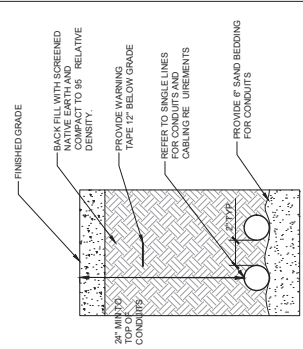
KEYNOTES

LEGEND

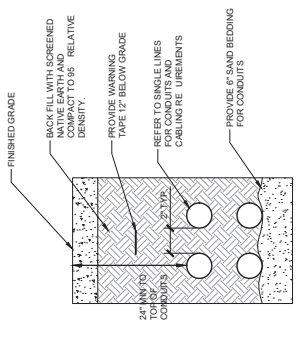
GENERAL NOTES



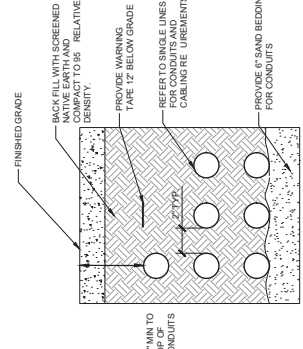
3. DETAIL - TRENCHING  
SCALE: NONE  
E4.0



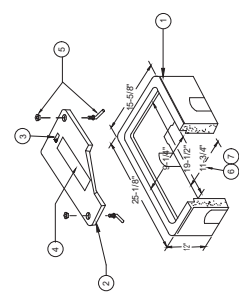
6. DETAIL - TRENCHING  
SCALE: NONE  
E4.0



2. DETAIL - TRENCHING  
SCALE: NONE  
E4.0



5. DETAIL - TRENCHING  
SCALE: NONE  
E4.0

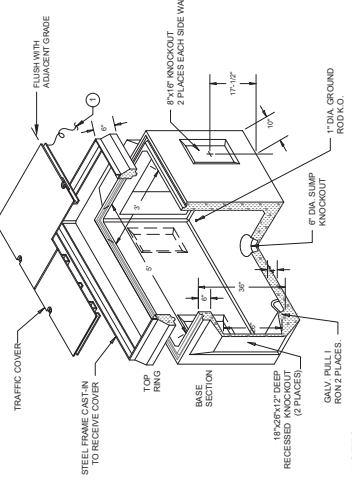


1. PRECAST CONCRETE BOTTOMLESS PULL BOX REINFORCED FOR 100 BRIDGE LOADING (IN ACCORDANCE WITH SECTION 05100) WITH CHECKERED TOP SURFACE.
2. GALVANI ED STEEL TRAFFIC COVER WITH CHECKERED TOP SURFACE.
3. LIFTING HOLE.
4. PROVIDE IDENTIFICATION "SIGNAL" OR "ELECTRICAL" AS APPROPRIATE, ON COVER IN 1" DIA. GROUND ROD 2 PLACES.
5. STAINLESS STEEL HEAD NUT AND SWING BOLT (2 ARE USED).
6. PROVIDE MIN. 6" GRAVEL FILL BED UNDER BODY OF BOX FOR DRAINAGE.
7. HANDLES USED TO SERVE LIGHTING AT POLES SHALL BE PROVIDED WITH GND. ROD AND SUBMERGIBLE INLINE FUSE HOLDERS WITH 10A FUSES.

1. POWER/SIGNAL HANDHOLE DETAIL  
SCALE: NONE  
E4.0

**INSTALLATION**

BOX TO BE PLACED ON 6" OF COMPACTED ROCK OR SAND TO INSURE UNIFORM DISTRIBUTION OF SOIL PRESSURE ON FLOOR.



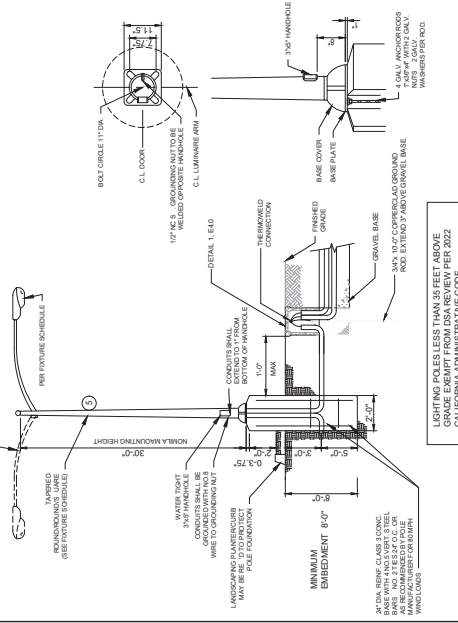
**NOTES**

1. BENS, 6" DIA. STRANDED COPPER, E. UNBENT GROUND TO METALLIC COVER BY MEANS OF GROUND LUG BOLTED TO COVER. PROVIDE 3" OF SLACK WIRE ABOVE COVER. SEE 05100 FOR FULL REQUIREMENTS OF BENDER.

4. RECESSED (FLUSH WITH GRADE) MOUNTED PULL BOX DETAIL  
SCALE: NONE  
E4.0



CITY OF BLYTHE SPECIFICATIONS



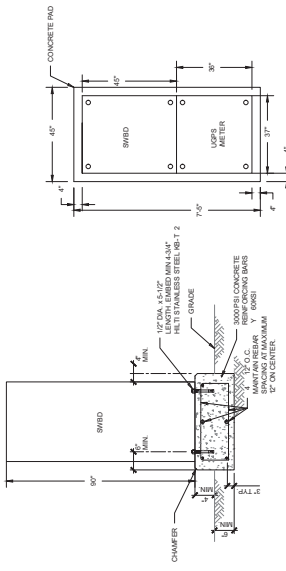
1  
E5.0  
SCALE: NONE  
DETAIL - LIGHT POLE AND BASE

- SHEET NOTES:
- 1 SEE STRUCTURAL DETAIL 1 ON SDJ1
  - 2 SEE STRUCTURAL DETAIL 2 ON SDJ1
  - 3 PROVIDE IOTC TIME CLOCK OPTION. IOTC COMPLIES WITH IOTC (6) AUTOMATIC SCHEDULING CONTROLS.
  - 4 PROVIDE DIMMING WIRING TO COMPLY WITH IOTC (12) AUTOMATIC SCHEDULING CONTROLS.
  - 5 COORDINATE WITH MANUFACTURING CAMERA POLE MOUNTING OPTION.
  - 6 IOTC CLOCK CONTROLLED BY IOTC USER TRANSFORMERS BUILT IN ASTRONOMICAL CLOCK OPTION.

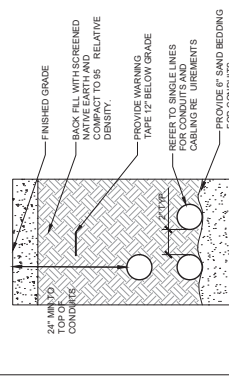
**LIGHTING FIXTURE SCHEDULE**

TYPE	SYMBOL	WATT	VOLT	LUMENS	DESCRIPTION	MANUFACTURER AND CATALOG NUMBER	MOUNTING
P	LED 1/225	72.1	120V	1125	PARKING LOT LIGHT FIXTURE TYPE NY MEDIUM LIGHT DISTRIBUTION. CAST ALUMINUM HOUSING. PROVIDE WITH AUTOMATIC SCHEDULING CONTROLS AND AUTOMATIC SCHEDULING CONTROLS.	LITHONIA RE-SKALD RE-SKALD RE-SKALD RE-SKALD	SQUARE POLE
KTS	LED 188	4.5 VA	10-15V	188	KT-3 LED IN-GRADE LIGHT ENTRY (DOORS)	FX LUMINAIRE	N-GRADE
K06	LED 260	8.7	10-15V	260	K06 LED WELL LIGHT (TREE LIGHTS)	KT-3 LED	TREE LIGHTS

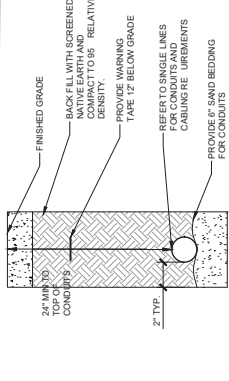
4  
E5.0  
SCALE: NONE  
FIXTURE SCHEDULE



2  
E5.0  
SCALE: NONE  
SWITCHBOARD ANCHORING DETAIL



6  
E5.0  
SCALE: NONE  
DETAIL - TRENCHING



3  
E5.0  
SCALE: NONE  
DETAIL - TRENCHING

KEYNOTES

CLIENT

PROJECT NAME  
CHILDREN'S MUSEUM CENTER BLYTHE

BUILDER  
141 S 2ND STREET  
BLYTHE CA, 92522

DESIGN CONSULTANT  
SULLMAN  
7515 Metropolitan Dr.  
San Diego, CA 92108  
T 619.284.7515  
F 619.294.5752  
WWW.SULLMAN.COM

DESIGN CONSULTANT  
EPI  
THE ENGINEERING PARTNERS, INC.  
CONSULTING ENGINEER  
10700 WALTON ROAD, SUITE 200  
SAN DIEGO, CA 92126  
TEL 619.574.9474 FAX 619.574.9474  
EPI 609-187494E

REGISTRATION STAMPS  
AGENCY APPROVAL

ISSUE

MARK DATE DESCRIPTION

DESIGNER PROJ. NO. SULLMAN  
DRAWN BY: SULLMAN  
CHECKED BY: SULLMAN  
SCALE: AS SHOWN  
SUBMITTAL: 03/29/22  
KEY PLAN

SHEET TITLE  
ELECTRICAL DETAILS

SHEET NUMBER  
E5.0

LEGEND

GENERAL NOTES

KEYNOTES

LEGEND

GENERAL NOTES

1

2

3

4

5

6

1

2

3

4

5

6

1

2

3

4

5

6

1

2

3

4

5

6

1

2

3

4

5

6











PROJECT NAME

PALO VERDE COLLEGE  
CHILD DEVELOPMENT  
CENTER

BUILDER

DESIGN CONSULTANT



7515 Metropolitan Dr.  
San Diego, CA 92108  
T 619.294.7515  
F 619.294.9752  
WWW.SULLIVAN-SD.COM

DESIGN CONSULTANT



VELTRE ENGINEERING, INC.  
FIRE PROTECTION ENGINEERING  
REGISTERED PROFESSIONAL ENGINEER  
NO. 25195  
SANTA ANA, CALIFORNIA 92701

REGISTRATION STAMPS



AGENCY APPROVAL

ISSUE

Table with columns: MARK, DATE, DESCRIPTION

Table with columns: DESIGNER PROJ. NO., DRAWN BY, CHECKED BY, SCALE, SUBMITTAL, KEY PLAN

SHEET TITLE

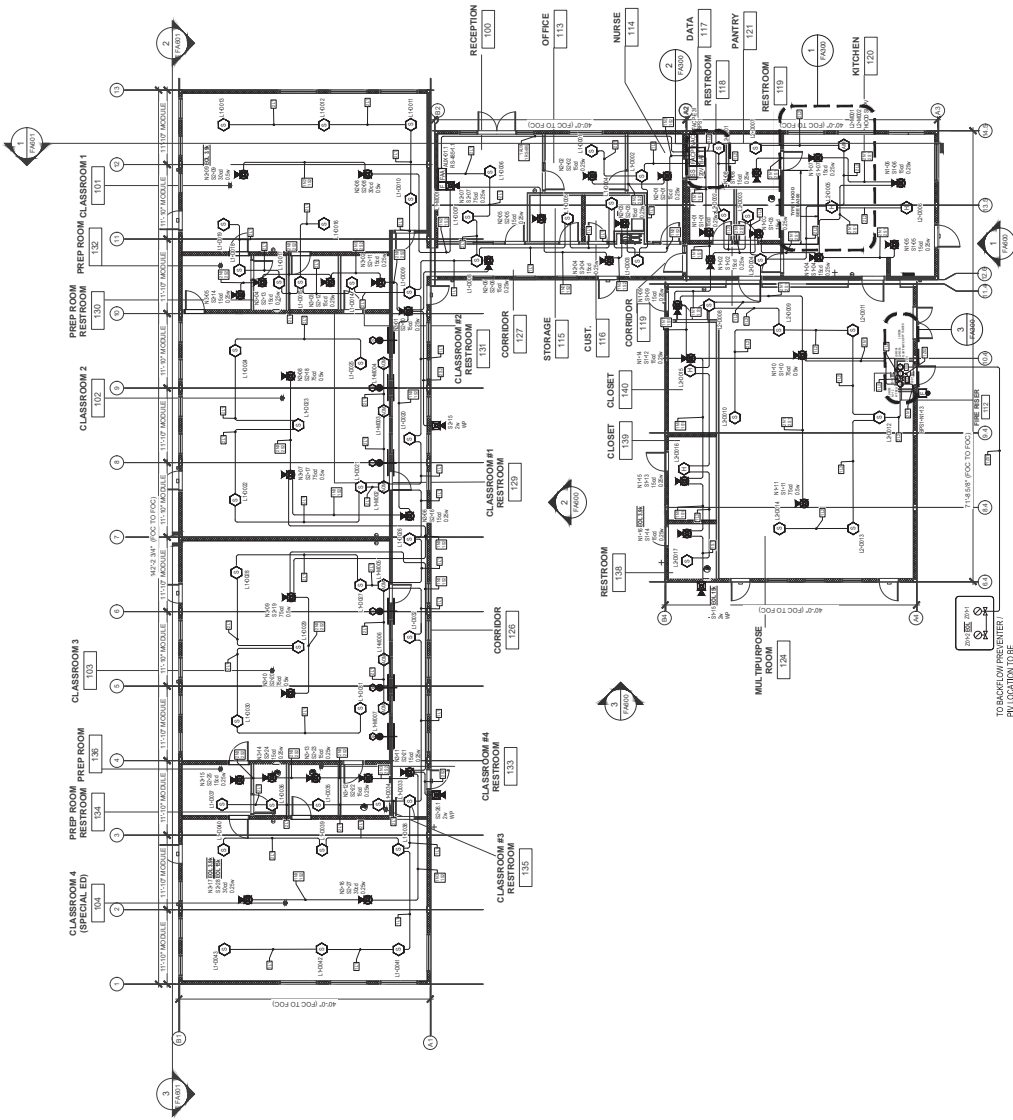
FIRE ALARM OVERALL  
FLOOR PLAN

SHEET NUMBER

FA200

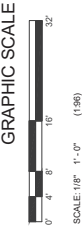
INSTALLATION NOTES

- 1. ALL DEVICES SHALL BE INSTALLED IN ACCORDANCE WITH THE MANUFACTURER'S INSTALLATION INSTRUCTIONS...
2. ALL DEVICES SHALL BE INSTALLED IN ACCORDANCE WITH THE MANUFACTURER'S INSTALLATION INSTRUCTIONS...
3. ALL DEVICES SHALL BE INSTALLED IN ACCORDANCE WITH THE MANUFACTURER'S INSTALLATION INSTRUCTIONS...



TO BACKFLOW PREVENTER, COORDINATED WITH CIV. 21.

1 FIRE ALARM OVERALL FLOOR PLAN  
SCALE: 1/8" = 1'



ANSI





CLIENT



PROJECT NAME

PALO VERDE COLLEGE CHILD DEVELOPMENT CENTER

BUILDER

DESIGN CONSULTANT

SULLIVAN

7515 Metropolitan Dr. San Diego, CA 92108 T 619.284.7515 F 619.284.5752 WWW.SULLIVANCD.COM

DESIGN CONSULTANT



REGISTRATION STAMPS



AGENCY APPROVAL

ISSUE

MARK

DATE

DESCRIPTION

DESIGNER PROJ. NO.

DRAWN BY: V. LITRE

CHECKED BY: V. LITRE

SCALE: As indicated

SUBMITTAL: 7/20/22

KEY PLAN

SHEET TITLE

FIRE ALARM PLAN AREA A

SHEET NUMBER

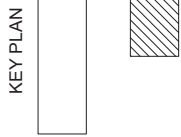
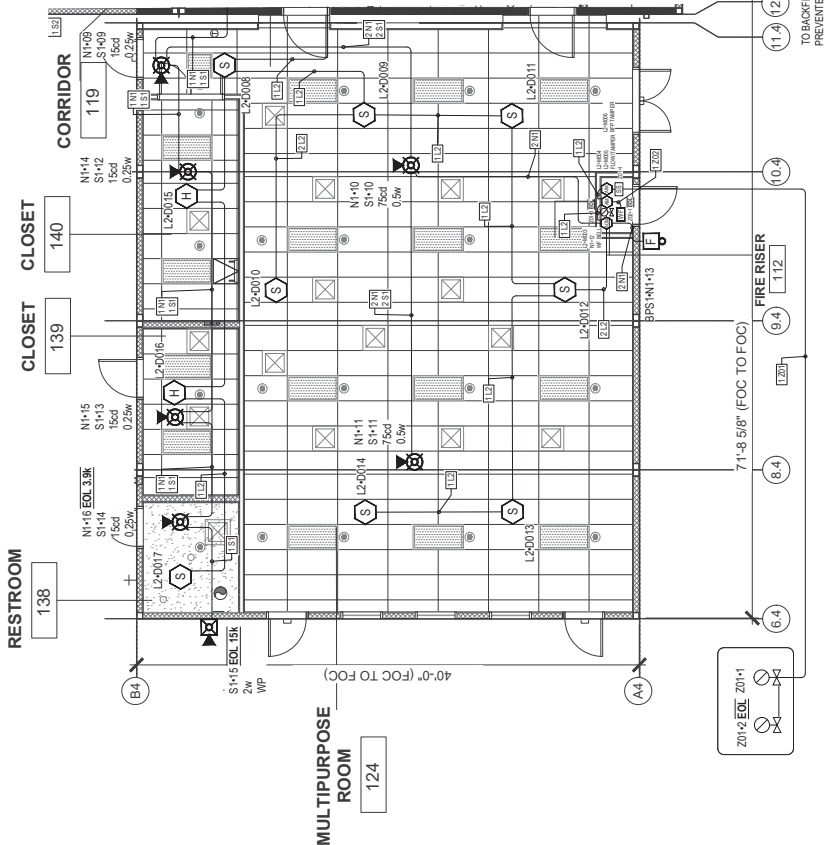
FA201.A

INSTALLATION NOTES

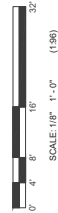
- ALL PERMITS THROUGHOUT THE PROJECT SHALL BE OBTAINED PRIOR TO THE START OF WORK. THE PERMIT SHALL BE FOR THE INSTALLATION OF THE FIRE ALARM SYSTEM AND THE PERMIT SHALL BE FOR THE INSTALLATION OF THE FIRE ALARM SYSTEM AND THE PERMIT SHALL BE FOR THE INSTALLATION OF THE FIRE ALARM SYSTEM...

Table with 4 columns: LABEL, PART NO, RESIS RANCE (DMFT), DESCRIPTION. Lists cable and wire sizes for different applications.

Table with 3 columns: SIZE, NAME, DESCRIPTION. Lists conduit sizes and materials for interior and underground pathways.



GRAPHIC SCALE



Rev. N.

1 FIRE ALARM PLAN AREA A

SCALE: 1/4" = 1'













**PROJECT NAME**  
PALO VERDE COLLEGE  
CHILD DEVELOPMENT  
CENTER

**BUILDER**

**DESIGN CONSULTANT**  
SULLMAN  
7515 Metropolitan Dr.,  
San Diego, CA 92108  
T 619.284.7515  
F 619.294.5752  
www.sullman.com

**DESIGN CONSULTANT**  
VEITRE ENGINEERING, INC.  
FIRE PROTECTION ENGINEERING  
REGISTERED PROFESSIONAL ENGINEER  
NO. 44800  
3400 LA JOLLA VILLAGE DRIVE, SUITE 400  
SAN DIEGO, CA 92161

**REGISTRATION STAMPS**

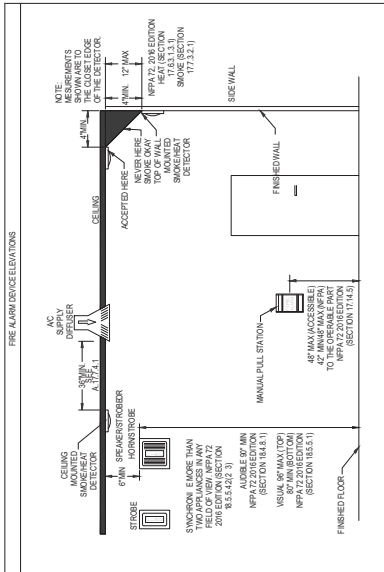


**AGENCY APPROVAL**

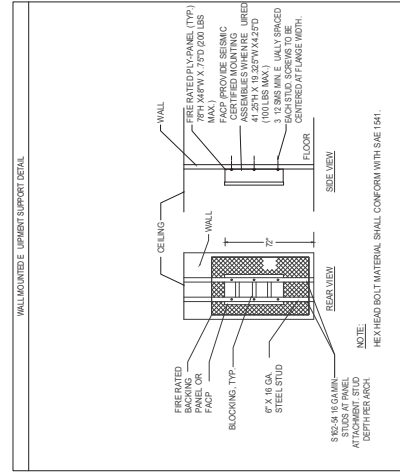
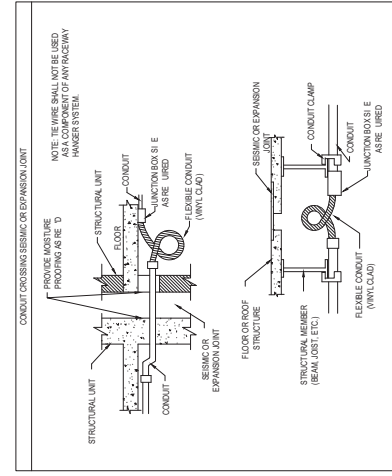
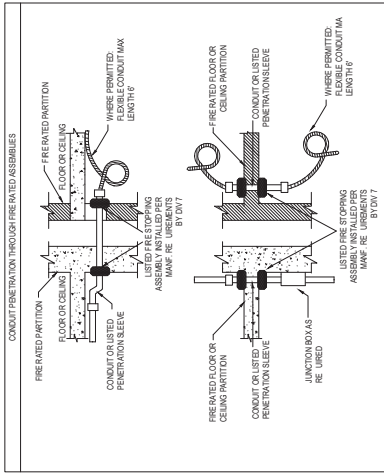
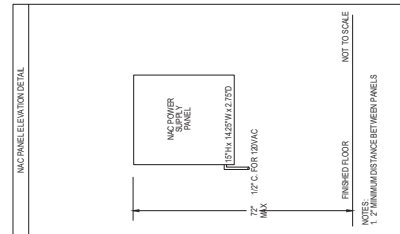
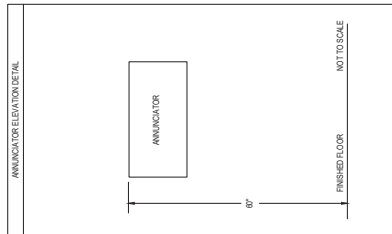
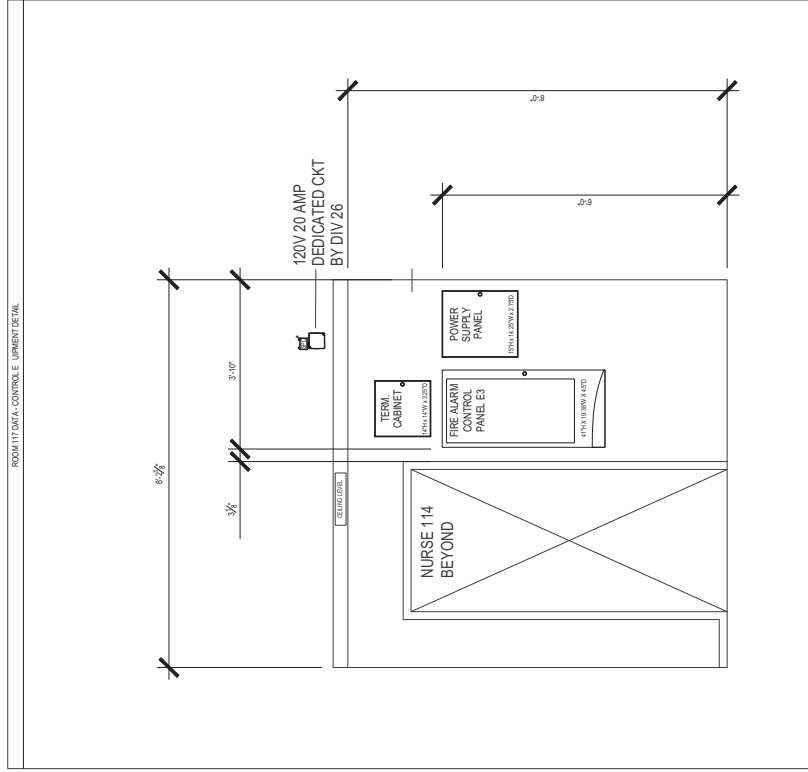
MARK	DATE	DESCRIPTION
DESIGNER PROJ. NO.		
DRAWN BY:		VELTRE
CHECKED BY:		VELTRE
SCALE:		As indicated
SUBMITTAL:		7/20/22
<b>KEY PLAN</b>		

**SHEET TITLE**  
FIRE ALARME UIPMENT  
DETAILS

**SHEET NUMBER**  
FA501



ROOM 114 DATA CONTROL EQUIPMENT DETAIL



1 FIRE ALARME UIPMENT DETAILS

SCALE: 1/8" = 1'-0"











CLIENT



PROJECT NAME  
PALO VERDE COLLEGE  
CHILD DEVELOPMENT  
CENTER  
BUILDER

DESIGN CONSULTANT  
SULLIVAN  
7515 Metropolitan Dr.  
San Diego, CA 92108  
T 619.284.7515  
F 619.294.9792  
www.sullivaninc.com

DESIGN CONSULTANT  
VE  
VELTRE ENGINEERING, INC.  
FIRE PROTECTION ENGINEERING  
REGISTERED PROFESSIONAL ENGINEER  
NO. 44868  
SANTA ANA, CALIFORNIA

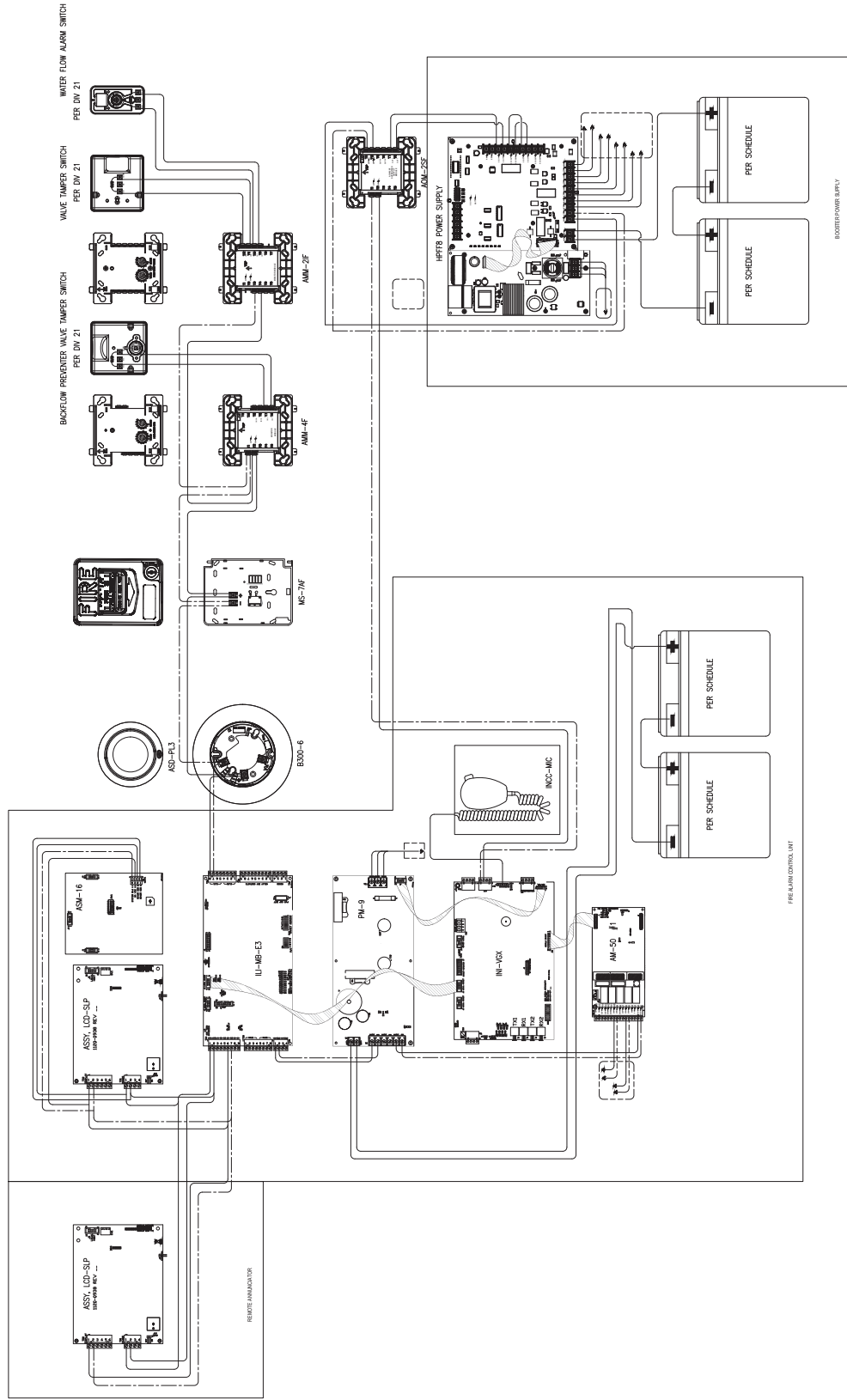


AGENCY APPROVAL

MARK	DATE	DESCRIPTION
DESIGNER PROJ. NO.		
DRAWN BY:	VELTRE	
CHECKED BY:	VELTRE	
SCALE:	As indicated	
SUBMITTAL:	7/20/22	
KEY PLAN		

SHEET TITLE  
FIRE ALARM SCHEMATIC  
DIAGRAMS

SHEET NUMBER  
FA701



1 FIRE ALARM SCHEMATIC DIAGRAMS  
SCALE: PVC-CDC-BENTHE







PROJECT NAME: PALO VERDE COLLEGE CHILD DEVELOPMENT CENTER

DESIGN CONSULTANT: SULLIVAN

DESIGN CONSULTANT: VEITRE ENGINEERING, INC.

REGISTRATION STAMPS



AGENCY APPROVAL

ISSUE

MARK DATE DESCRIPTION

SHEET TITLE: FIRE ALARM POINT SCHEDULES

SHEET NUMBER: FA803

BPS1 N1 POINT-TO-POINT REPORT

Table with columns: Device Label, Part No., Description, Device Current (A), Remaining Current (A), Dist. From Previous (ft), Resistance From Previous (Ohm), Voltage At Device, Voltage Drop Percent, and TOTALS.

BPS1 N2 POINT-TO-POINT REPORT

Table with columns: Device Label, Part No., Description, Device Current (A), Remaining Current (A), Dist. From Previous (ft), Resistance From Previous (Ohm), Voltage At Device, Voltage Drop Percent, and TOTALS.

BPS1 N3 POINT-TO-POINT REPORT

Table with columns: Device Label, Part No., Description, Device Current (A), Remaining Current (A), Dist. From Previous (ft), Resistance From Previous (Ohm), Voltage At Device, Voltage Drop Percent, and TOTALS.

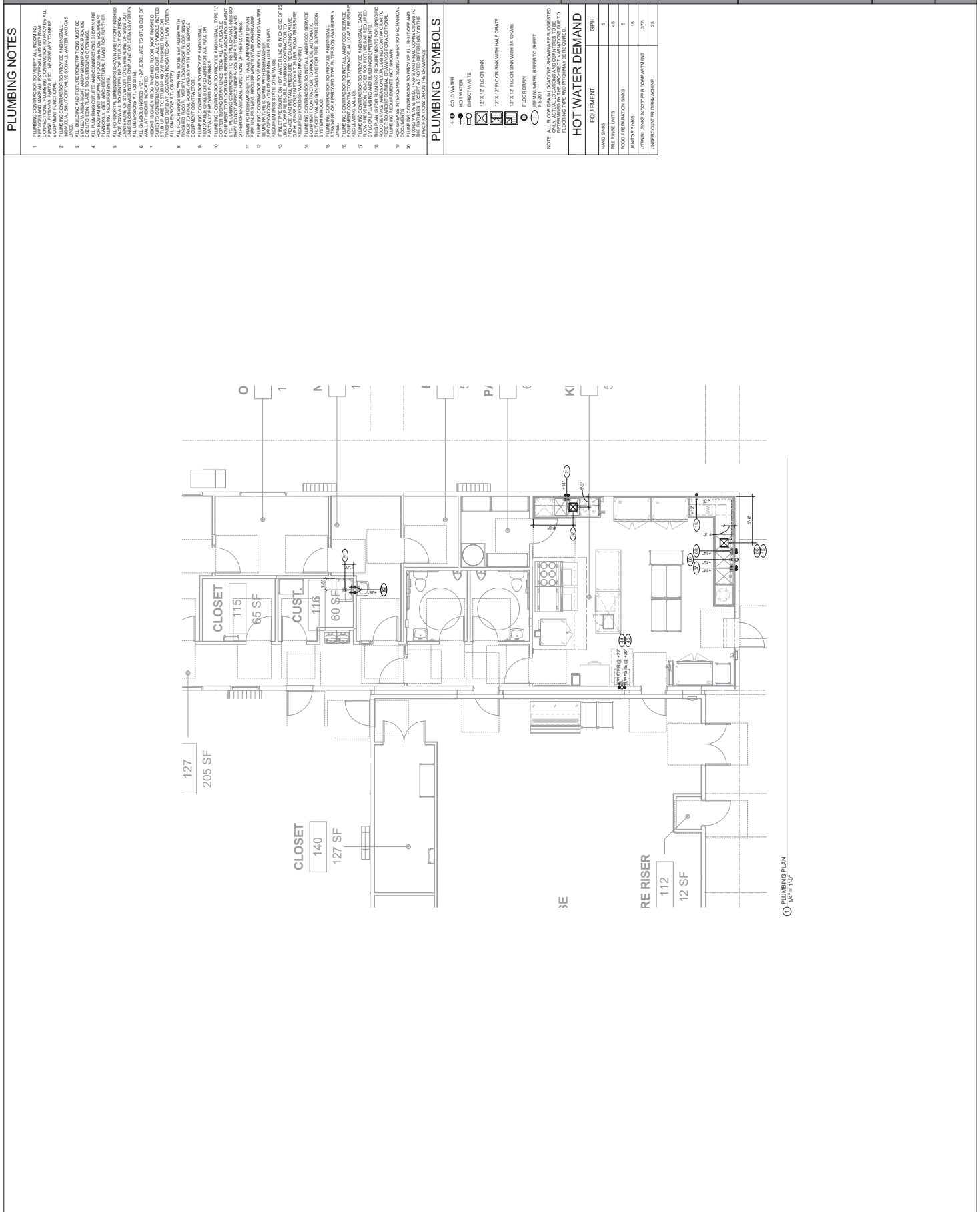












**PLUMBING NOTES**

1. PLUMBING CONTRACTOR SHALL VERIFY ALL DIMENSIONS AND LOCATIONS OF ALL EXISTING AND PROPOSED PLUMBING FIXTURES, TRIM, ETC. NECESSARY TO MAKE SURE ALL DIMENSIONS AND LOCATIONS ARE CORRECT AND AS SHOWN ON ALL WATER AND GAS INSTRUMENTAL SHOP DRAWINGS AND ON ALL WATER AND GAS INSTRUMENTAL SHOP DRAWINGS.
2. PLUMBING CONTRACTOR TO PROVIDE AND INSTALL ALL DIMENSIONS AND LOCATIONS OF ALL EXISTING AND PROPOSED PLUMBING FIXTURES, TRIM, ETC. NECESSARY TO MAKE SURE ALL DIMENSIONS AND LOCATIONS ARE CORRECT AND AS SHOWN ON ALL WATER AND GAS INSTRUMENTAL SHOP DRAWINGS AND ON ALL WATER AND GAS INSTRUMENTAL SHOP DRAWINGS.
3. ALL DIMENSIONS AND LOCATIONS OF ALL EXISTING AND PROPOSED PLUMBING FIXTURES, TRIM, ETC. NECESSARY TO MAKE SURE ALL DIMENSIONS AND LOCATIONS ARE CORRECT AND AS SHOWN ON ALL WATER AND GAS INSTRUMENTAL SHOP DRAWINGS AND ON ALL WATER AND GAS INSTRUMENTAL SHOP DRAWINGS.
4. ALL DIMENSIONS AND LOCATIONS OF ALL EXISTING AND PROPOSED PLUMBING FIXTURES, TRIM, ETC. NECESSARY TO MAKE SURE ALL DIMENSIONS AND LOCATIONS ARE CORRECT AND AS SHOWN ON ALL WATER AND GAS INSTRUMENTAL SHOP DRAWINGS AND ON ALL WATER AND GAS INSTRUMENTAL SHOP DRAWINGS.
5. ALL DIMENSIONS AND LOCATIONS OF ALL EXISTING AND PROPOSED PLUMBING FIXTURES, TRIM, ETC. NECESSARY TO MAKE SURE ALL DIMENSIONS AND LOCATIONS ARE CORRECT AND AS SHOWN ON ALL WATER AND GAS INSTRUMENTAL SHOP DRAWINGS AND ON ALL WATER AND GAS INSTRUMENTAL SHOP DRAWINGS.
6. ALL DIMENSIONS AND LOCATIONS OF ALL EXISTING AND PROPOSED PLUMBING FIXTURES, TRIM, ETC. NECESSARY TO MAKE SURE ALL DIMENSIONS AND LOCATIONS ARE CORRECT AND AS SHOWN ON ALL WATER AND GAS INSTRUMENTAL SHOP DRAWINGS AND ON ALL WATER AND GAS INSTRUMENTAL SHOP DRAWINGS.
7. PLUMBING CONTRACTOR SHALL VERIFY ALL DIMENSIONS AND LOCATIONS OF ALL EXISTING AND PROPOSED PLUMBING FIXTURES, TRIM, ETC. NECESSARY TO MAKE SURE ALL DIMENSIONS AND LOCATIONS ARE CORRECT AND AS SHOWN ON ALL WATER AND GAS INSTRUMENTAL SHOP DRAWINGS AND ON ALL WATER AND GAS INSTRUMENTAL SHOP DRAWINGS.
8. ALL DIMENSIONS AND LOCATIONS OF ALL EXISTING AND PROPOSED PLUMBING FIXTURES, TRIM, ETC. NECESSARY TO MAKE SURE ALL DIMENSIONS AND LOCATIONS ARE CORRECT AND AS SHOWN ON ALL WATER AND GAS INSTRUMENTAL SHOP DRAWINGS AND ON ALL WATER AND GAS INSTRUMENTAL SHOP DRAWINGS.
9. ALL DIMENSIONS AND LOCATIONS OF ALL EXISTING AND PROPOSED PLUMBING FIXTURES, TRIM, ETC. NECESSARY TO MAKE SURE ALL DIMENSIONS AND LOCATIONS ARE CORRECT AND AS SHOWN ON ALL WATER AND GAS INSTRUMENTAL SHOP DRAWINGS AND ON ALL WATER AND GAS INSTRUMENTAL SHOP DRAWINGS.
10. ALL DIMENSIONS AND LOCATIONS OF ALL EXISTING AND PROPOSED PLUMBING FIXTURES, TRIM, ETC. NECESSARY TO MAKE SURE ALL DIMENSIONS AND LOCATIONS ARE CORRECT AND AS SHOWN ON ALL WATER AND GAS INSTRUMENTAL SHOP DRAWINGS AND ON ALL WATER AND GAS INSTRUMENTAL SHOP DRAWINGS.
11. ALL DIMENSIONS AND LOCATIONS OF ALL EXISTING AND PROPOSED PLUMBING FIXTURES, TRIM, ETC. NECESSARY TO MAKE SURE ALL DIMENSIONS AND LOCATIONS ARE CORRECT AND AS SHOWN ON ALL WATER AND GAS INSTRUMENTAL SHOP DRAWINGS AND ON ALL WATER AND GAS INSTRUMENTAL SHOP DRAWINGS.
12. ALL DIMENSIONS AND LOCATIONS OF ALL EXISTING AND PROPOSED PLUMBING FIXTURES, TRIM, ETC. NECESSARY TO MAKE SURE ALL DIMENSIONS AND LOCATIONS ARE CORRECT AND AS SHOWN ON ALL WATER AND GAS INSTRUMENTAL SHOP DRAWINGS AND ON ALL WATER AND GAS INSTRUMENTAL SHOP DRAWINGS.
13. ALL DIMENSIONS AND LOCATIONS OF ALL EXISTING AND PROPOSED PLUMBING FIXTURES, TRIM, ETC. NECESSARY TO MAKE SURE ALL DIMENSIONS AND LOCATIONS ARE CORRECT AND AS SHOWN ON ALL WATER AND GAS INSTRUMENTAL SHOP DRAWINGS AND ON ALL WATER AND GAS INSTRUMENTAL SHOP DRAWINGS.
14. ALL DIMENSIONS AND LOCATIONS OF ALL EXISTING AND PROPOSED PLUMBING FIXTURES, TRIM, ETC. NECESSARY TO MAKE SURE ALL DIMENSIONS AND LOCATIONS ARE CORRECT AND AS SHOWN ON ALL WATER AND GAS INSTRUMENTAL SHOP DRAWINGS AND ON ALL WATER AND GAS INSTRUMENTAL SHOP DRAWINGS.
15. ALL DIMENSIONS AND LOCATIONS OF ALL EXISTING AND PROPOSED PLUMBING FIXTURES, TRIM, ETC. NECESSARY TO MAKE SURE ALL DIMENSIONS AND LOCATIONS ARE CORRECT AND AS SHOWN ON ALL WATER AND GAS INSTRUMENTAL SHOP DRAWINGS AND ON ALL WATER AND GAS INSTRUMENTAL SHOP DRAWINGS.
16. ALL DIMENSIONS AND LOCATIONS OF ALL EXISTING AND PROPOSED PLUMBING FIXTURES, TRIM, ETC. NECESSARY TO MAKE SURE ALL DIMENSIONS AND LOCATIONS ARE CORRECT AND AS SHOWN ON ALL WATER AND GAS INSTRUMENTAL SHOP DRAWINGS AND ON ALL WATER AND GAS INSTRUMENTAL SHOP DRAWINGS.
17. ALL DIMENSIONS AND LOCATIONS OF ALL EXISTING AND PROPOSED PLUMBING FIXTURES, TRIM, ETC. NECESSARY TO MAKE SURE ALL DIMENSIONS AND LOCATIONS ARE CORRECT AND AS SHOWN ON ALL WATER AND GAS INSTRUMENTAL SHOP DRAWINGS AND ON ALL WATER AND GAS INSTRUMENTAL SHOP DRAWINGS.
18. ALL DIMENSIONS AND LOCATIONS OF ALL EXISTING AND PROPOSED PLUMBING FIXTURES, TRIM, ETC. NECESSARY TO MAKE SURE ALL DIMENSIONS AND LOCATIONS ARE CORRECT AND AS SHOWN ON ALL WATER AND GAS INSTRUMENTAL SHOP DRAWINGS AND ON ALL WATER AND GAS INSTRUMENTAL SHOP DRAWINGS.
19. ALL DIMENSIONS AND LOCATIONS OF ALL EXISTING AND PROPOSED PLUMBING FIXTURES, TRIM, ETC. NECESSARY TO MAKE SURE ALL DIMENSIONS AND LOCATIONS ARE CORRECT AND AS SHOWN ON ALL WATER AND GAS INSTRUMENTAL SHOP DRAWINGS AND ON ALL WATER AND GAS INSTRUMENTAL SHOP DRAWINGS.
20. ALL DIMENSIONS AND LOCATIONS OF ALL EXISTING AND PROPOSED PLUMBING FIXTURES, TRIM, ETC. NECESSARY TO MAKE SURE ALL DIMENSIONS AND LOCATIONS ARE CORRECT AND AS SHOWN ON ALL WATER AND GAS INSTRUMENTAL SHOP DRAWINGS AND ON ALL WATER AND GAS INSTRUMENTAL SHOP DRAWINGS.

**PLUMBING SYMBOLS**

- 1-0 COLD WATER
- 1-1 HOT WATER
- 1-2 DIRECT WASTE
- 1-3 2" X 1/2" FLOOR SINK
- 1-4 2" X 1/2" FLOOR SINK WITH HALF GRATE
- 1-5 2" X 1/2" FLOOR SINK WITH 1/4" GRATE
- 1-6 FLOOR DRAIN
- 1-7 NUMBER REFER TO SHEET

**HOT WATER DEMAND**

EQUIPMENT	GPH
HAND SINKS	5
PREP SINKS	45
FOOD PREPARATION SINKS	5
JANITOR SINKS	15
URINALS SINKS (TOP PER COMPARTMENT UNDERCOUNTER DISHWASHER)	25

NOTE: ALL FLOOR DRAIN LOCATIONS SHOWN ARE SUGGESTED LOCATIONS. THE ARCHITECT'S INTENTIONS ARE TO BE DETERMINED BY THE ARCHITECT'S VARIATIONS DUE TO FIELD CONDITIONS. THE ARCHITECT'S VARIATIONS DUE TO FIELD CONDITIONS SHALL BE THE RESPONSIBILITY OF THE ARCHITECT.

**CLIENT**

FOR THE CITY OF SAN DIEGO  
 APP# 044-20844 INC  
 THE BOARD OF  
 SUPERVISORS  
 DATE: 08/20/2022

**PROJECT NAME**  
 PULLMAN CHILD DEVELOPMENT CENTER, N.Y.C.

141 S 2ND ST  
 SAN DIEGO, CA 92105

**BUILDER**

**DESIGN CONSULTANT**  
 7515 Metropolitan Dr.  
 San Diego, CA 92108  
 T 619.284.7515  
 F 619.284.5752  
 WWW.SILLMAN.COM

**DESIGN CONSULTANT**  
**sillman**  
 1825 N. La Jolla Village Drive, Suite 100, San Diego, CA 92038  
 P 619.552.1818  
 WWW.SILLMAN.COM

**REGISTRATION STAMPS**

**AGENCY APPROVAL**

**MARK**

**DATE**

**DESCRIPTION**

**DESIGNER PROJ. NO.**

**DRAWN BY:** SILLMAN

**CHECKED BY:** SILLMAN

**SCALE:** AS SHOWN

**SUBMITTAL:** 07/20/22

**KEY PLAN**

**SHEET TITLE**  
 PLUMBING PLAN

**SHEET NUMBER**  
 FS-301







CLIENT



PROJECT NAME

PAULY MARRAS CHILD DEVELOPMENT CENTER BLYTHE

DESIGN CONSULTANT

7515 Metropolitan Dr. San Diego, CA 92108

DESIGN CONSULTANT

webb. logo and contact info

REGISTRATION STAMPS



AGENCY APPROVAL

Table with columns: MARK, DATE, DESCRIPTION

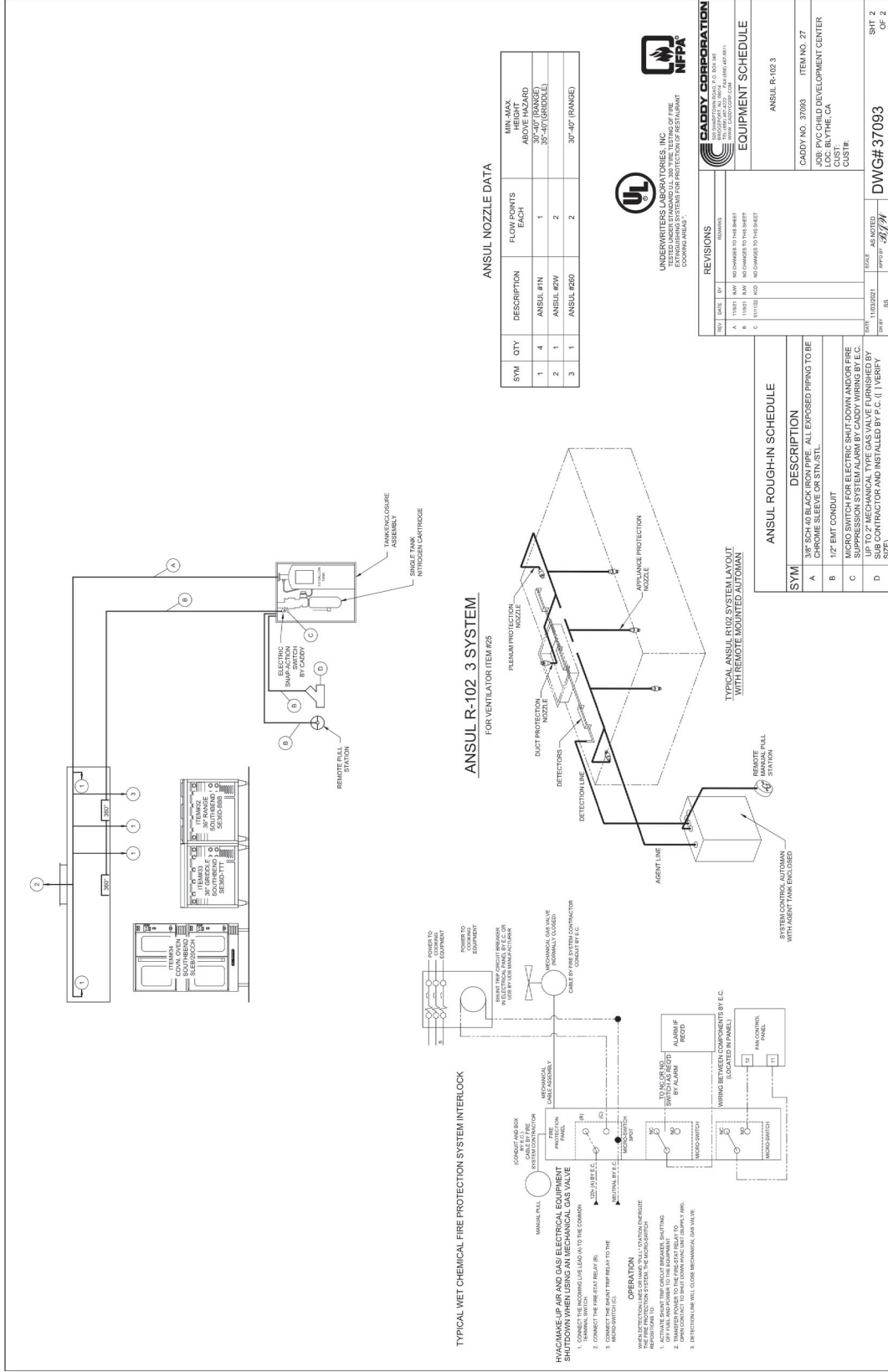
DESIGNER PROJ. NO. SULLMAN
DRAWN BY: SULLMAN
CHECKED BY: SULLMAN
SCALE:
SUBMITTAL: 07/26/22
KEY PLAN

SHEET TITLE

HOOD DETAILS

SHEET NUMBER

FS-503



ANSUL R-102 3 SYSTEM FOR VENTILATOR ITEM #25

ANSUL NOZZLE DATA table with columns: SYM, QTY, DESCRIPTION, FLOW POINTS EACH, MIN. MAX. HEIGHT, APPL. NO. (RANGE), ANSUL #1 IN, ANSUL #2 IN, ANSUL #260, ANSUL #260 (RANGE)



REVISIONS table with columns: NO. DATE BY, REVISIONS

EQUIPMENT SCHEDULE table with columns: SYM, DESCRIPTION

ANSUL ROUGH-IN SCHEDULE table with columns: SYM, DESCRIPTION







PROJECT NAME:
BUILDING OWNER:
CHILD DEVELOPMENT CENTER BY THE
141 S 2ND ST STEET
SAN JOSE, CA 95128
BUILDER:

DESIGN CONSULTANT:
7515 Metropolitan Dr.
San Diego, CA 92108
T 619.284.7515
F 619.284.5792
WWW.SILLMAN.COM



webb.
7515 Metropolitan Dr.
San Diego, CA 92108
P 619.535.1815
WWW.WEBBINC.COM

REGISTRATION STAMPS



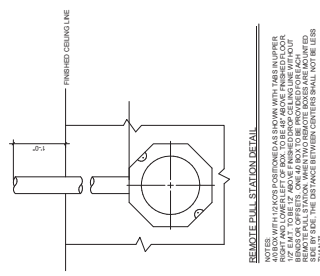
AGENCY APPROVAL

Table with columns: MARK, DATE, DESCRIPTION

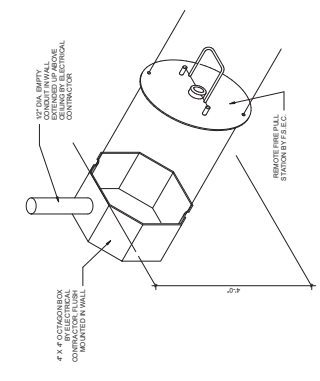
DESIGNER PROJ. NO.
DRAWN BY:
CHECKED BY:
SCALE:
SUBMITTAL:
KEY PLAN

SHEET TITLE
CONSTRUCTION DETAILS

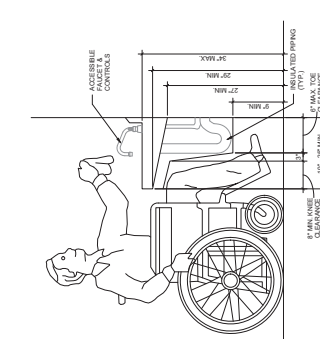
SHEET NUMBER
FS-701



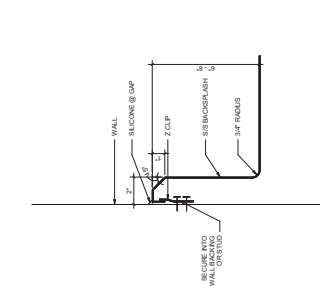
REMOTE PILL STATION DETAIL
NOT TO SCALE



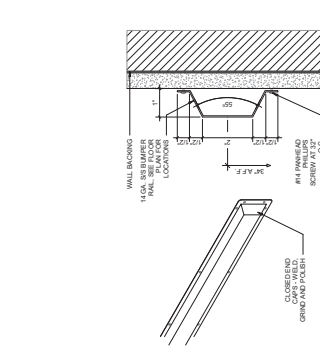
FIRE PULL DETAIL
NOT TO SCALE



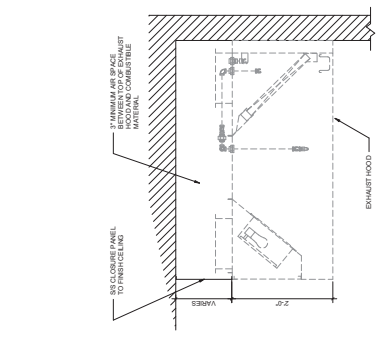
ACCESSIBLE HAND SINK DETAIL
NOT TO SCALE



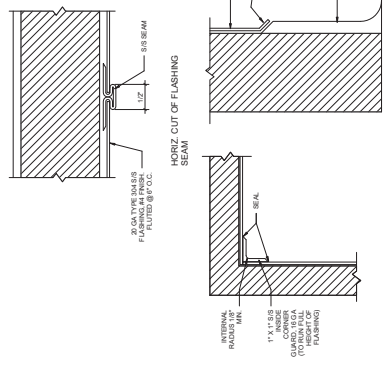
BACKSPASH DETAIL
NOT TO SCALE



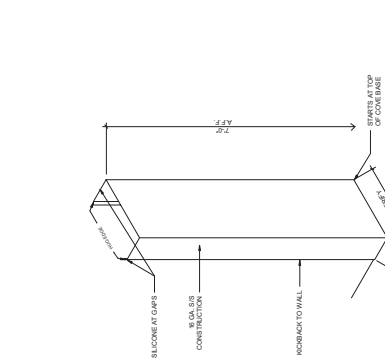
BUMPER RAIL DETAIL
NOT TO SCALE



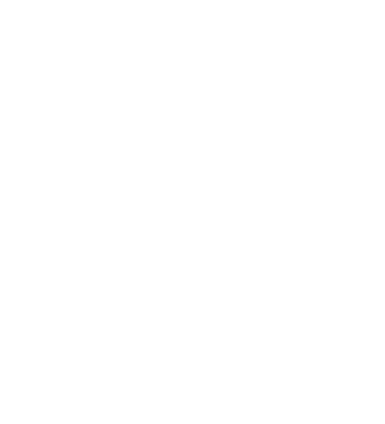
MOISTURE CLOSURE PANEL DETAIL
NOT TO SCALE



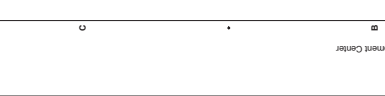
WALL FLASHING DETAIL
NOT TO SCALE



WALL CAP DETAIL
NOT TO SCALE



HORIZ CUT OF INSIDE CORNER GUARD
NOT TO SCALE



HORIZ CUT OF FLASHING BEAM
NOT TO SCALE



**CLIENT**

1415 S 2ND ST  
SANTA ANA, CA 92705  
TEL: 714.241.1000  
WWW.SILLMAN.COM

**PROJECT NAME**  
CHILD DEVELOPMENT CENTER BLDG

**BUILDER**  
1415 S 2ND ST  
SANTA ANA, CA 92705

**DESIGN CONSULTANT**  
SILLMAN

**DESIGN CONSULTANT**  
7515 Metropolitan Dr.  
San Diego, CA 92108  
T 619.284.7515  
F 619.284.9792  
WWW.SILLMAN.COM

**REGISTRATION STAMPS**

**AGENCY APPROVAL**

**MARK DATE DESCRIPTION**

**DESIGNER PROJ. NO.**  
SILLMAN

**DRAWN BY:**  
SILLMAN

**CHECKED BY:**  
SILLMAN

**SCALE:**  
1" = 1'-0"

**SUBMITTAL:**  
07/20/22

**KEY PLAN**

**FIGURE A-2 WALL ATTACHED SINK WORK TABLE WITH WALL CAP**

**NOTE:**  
1. THE WALL CAP AND JOINTS BETWEEN METAL ELEMENTS ARE CRITICAL TO THE TABLE'S STABILITY. SEE THE WALL CAP DETAIL FOR SPACING BETWEEN THE METAL ELEMENTS.

**FIGURE A-2**  
1" = 1'-0"

**FIGURE A-6 WALL ATTACHMENT**

**NOTE:**  
1. THE SHELF ATTACHMENT SHALL BE GREATER THAN OR EQUAL TO THE HEIGHT OF THE FORMER. A MINIMUM OF 2\"/>

**FIGURE A-6**  
1" = 1'-0"

**FIGURE A-7 FLOOR MOUNTED APPLIANCE**

**NOTE:**  
1. THE SHELF ATTACHMENT SHALL BE GREATER THAN OR EQUAL TO THE HEIGHT OF THE FORMER. A MINIMUM OF 2\"/>

**FIGURE A-7**  
1" = 1'-0"

**FIGURE A-22 FOOT DETAILS**

**NOTE:**  
1. THE FOOT SHALL BE MADE OF 1/2\"/>

**FIGURE A-22**  
1" = 1'-0"

**FIGURE A-24 WALL SUPPORT BACKING**

**NOTE:**  
1. THE WALL SHALL BE MADE OF 1/2\"/>

**FIGURE A-24**  
1" = 1'-0"

**FIGURE A-28 OFFSET CLIPS**

**NOTE:**  
1. THE CLIP SHALL BE MADE OF 1/2\"/>

**FIGURE A-28**  
1" = 1'-0"

**FIGURE A-17 WALL MOUNTED SHELVES**

**NOTE:**  
1. THE SHELF SHALL BE MADE OF 1/2\"/>

**FIGURE A-17**  
1" = 1'-0"

**FIGURE A-33 FURRING CHANNEL CONNECTIONS**

**NOTE:**  
1. THE CHANNEL SHALL BE MADE OF 1/2\"/>

**FIGURE A-33**  
1" = 1'-0"

**FIGURE A-34 TYPICAL ANCHORAGE FOR MOBILE EQUIPMENT**

**NOTE:**  
1. THE ANCHOR SHALL BE MADE OF 1/2\"/>

**FIGURE A-34**  
1" = 1'-0"

**ANCHORAGE DETAILS**

**SHEET NUMBER**  
FS-802







DAVID W. HINES  
 DIV. OF THE STATE ARCHITECT  
 APP: 04-120844 INC.  
 REVIEWED FOR:  
 SHEET NO. FLS 01 ACS 01  
 DATE: 08/26/2020

THESE PLANS AND SPECIFICATIONS ARE THE PROPERTY OF USA SHADE AND FABRIC. REPRODUCED WITHOUT THEIR WRITTEN PERMISSION.



CORPORATE HEADQUARTERS  
 2500 WESTCAMP DRIVE, SUITE 100  
 DFW AIRPORT, TX, 75261  
 800-966-5005

CERTIFICATIONS:  
 IAC CERTIFICATION No: F4-48  
 CERTIFICATION NUMBER: INCL0013055

CUSTOMER:  
**Palo Verde College**

PROJECT NAME:  
**Palo Verde College**

LOCATION:  
**One College Drive  
 Blythe, CA 92225**

MODEL NUMBER:  
**DSA4013040-19**



STRUCTURE TYPE:  
**HIP**

DESIGN:  
**DSA**

SIZE:  
**MAXIMUM  
 30' x 40' x 15' MAX.**

SCALE:  
**NONE**

DRAWING SIZE:  
**D**

PRE-CHECK (PC)  
 DOCUMENT  
 Code: 2019 CBC  
 A seal and stamp for construction is required.

Eng. By: **JO** 06/26/20  
 Design By: **JO** 06/26/20  
 Approved By: **JO** 06/26/20

DRAWING DESCRIPTION:  
**REACTIONS**

DWG: **DSA4013040-19**  
 SHEET: **3.2-2000**  
 REV: **NC**

**Aircraft Cable**  
 Provide the following with commercial specifications military and federal specification rope available.

**Carbon Steel (Aircraft Cable) - Galvanized**  
 to full corrosion resistance in rural to industrial atmosphere. The following materials offered. If no good quality material is available, the manufacturer's galvanized cable offers greater corrosion resistance and reduced friction over pulleys.

7 x 19	Approx. WT (lbs)	Approx. WT (kg)	Approx. WT (lb/ft)	Approx. WT (kg/m)
1/8"	1.0	0.45	0.08	0.30
3/16"	2.2	1.0	0.18	0.65
1/4"	3.3	1.5	0.27	0.98
5/16"	4.7	2.1	0.38	1.37
3/8"	6.6	3.0	0.53	1.91
7/16"	9.2	4.2	0.72	2.58
1/2"	12.0	5.4	0.96	3.45
5/8"	16.0	7.3	1.28	4.60
3/4"	21.0	9.5	1.68	6.00
7/8"	27.0	12.2	2.16	7.70
1"	34.0	15.4	2.72	9.80
1 1/8"	42.0	19.0	3.36	12.10
1 1/4"	51.0	23.1	4.08	14.70
1 1/2"	61.0	27.7	4.98	17.80
1 3/4"	72.0	32.7	5.95	21.60
2"	88.0	40.0	7.16	25.80
2 1/4"	108.0	49.0	8.72	31.40
2 1/2"	120.0	54.4	9.60	34.50
2 3/4"	134.0	60.8	10.64	38.30
3"	150.0	68.0	12.24	44.10
3 1/2"	180.0	81.6	14.76	53.10
4"	216.0	97.9	17.82	64.10
4 1/2"	258.0	116.9	21.06	76.10
5"	300.0	136.0	24.48	88.10
5 1/2"	354.0	160.0	28.80	104.10
6"	408.0	184.0	33.60	121.10
6 1/2"	474.0	215.0	39.12	140.10
7"	540.0	245.0	45.36	162.10
7 1/2"	618.0	280.0	51.84	186.10
8"	700.0	316.0	58.80	212.10
8 1/2"	798.0	359.0	66.72	240.10
9"	900.0	405.0	75.60	270.10
9 1/2"	1014.0	459.0	85.02	305.10
10"	1140.0	516.0	95.04	342.10
10 1/2"	1278.0	577.0	105.72	381.10
11"	1428.0	642.0	117.12	423.10
11 1/2"	1590.0	711.0	129.24	468.10
12"	1764.0	792.0	143.16	516.10
12 1/2"	1950.0	876.0	158.04	567.10
13"	2148.0	963.0	173.76	621.10
13 1/2"	2358.0	1064.0	190.32	678.10
14"	2580.0	1168.0	207.72	738.10
14 1/2"	2814.0	1275.0	225.96	801.10
15"	3060.0	1386.0	245.04	867.10
15 1/2"	3318.0	1500.0	264.96	936.10
16"	3588.0	1617.0	285.72	1008.10
16 1/2"	3870.0	1738.0	307.32	1083.10
17"	4164.0	1863.0	329.76	1161.10
17 1/2"	4470.0	1992.0	353.04	1242.10
18"	4788.0	2125.0	377.16	1326.10
18 1/2"	5118.0	2262.0	402.12	1413.10
19"	5460.0	2403.0	427.92	1503.10
19 1/2"	5814.0	2548.0	454.56	1596.10
20"	6180.0	2697.0	482.04	1692.10
20 1/2"	6558.0	2850.0	510.36	1791.10
21"	6948.0	3007.0	539.52	1893.10
21 1/2"	7350.0	3168.0	569.52	2000.10
22"	7764.0	3333.0	600.36	2110.10
22 1/2"	8190.0	3502.0	632.04	2223.10
23"	8628.0	3675.0	664.56	2339.10
23 1/2"	9078.0	3852.0	697.92	2458.10
24"	9540.0	4033.0	732.12	2580.10
24 1/2"	10014.0	4218.0	767.16	2705.10
25"	10500.0	4407.0	803.04	2833.10
25 1/2"	11000.0	4600.0	839.76	2964.10
26"	11514.0	4797.0	877.32	3100.10
26 1/2"	12042.0	4998.0	915.72	3239.10
27"	12584.0	5203.0	954.96	3381.10
27 1/2"	13140.0	5412.0	995.04	3526.10
28"	13710.0	5625.0	1035.96	3674.10
28 1/2"	14294.0	5842.0	1077.72	3825.10
29"	14892.0	6063.0	1120.32	3979.10
29 1/2"	15504.0	6288.0	1163.76	4136.10
30"	16130.0	6517.0	1208.04	4296.10
30 1/2"	16770.0	6750.0	1253.16	4459.10
31"	17424.0	6987.0	1299.12	4625.10
31 1/2"	18090.0	7238.0	1345.92	4794.10
32"	18768.0	7493.0	1393.56	4966.10
32 1/2"	19460.0	7752.0	1442.04	5141.10
33"	20166.0	8015.0	1491.36	5319.10
33 1/2"	20886.0	8282.0	1541.46	5500.10
34"	21620.0	8553.0	1592.36	5684.10
34 1/2"	22368.0	8828.0	1644.06	5871.10
35"	23130.0	9107.0	1696.56	6061.10
35 1/2"	23906.0	9390.0	1749.84	6254.10
36"	24706.0	9677.0	1803.90	6450.10
36 1/2"	25530.0	9968.0	1858.74	6649.10
37"	26368.0	10263.0	1914.36	6851.10
37 1/2"	27230.0	10562.0	1970.76	7056.10
38"	28106.0	10865.0	2027.96	7264.10
38 1/2"	29006.0	11172.0	2085.96	7474.10
39"	29930.0	11483.0	2144.76	7686.10
39 1/2"	30878.0	11798.0	2204.34	7900.10
40"	31850.0	12117.0	2264.70	8116.10
40 1/2"	32846.0	12440.0	2325.84	8334.10
41"	33866.0	12767.0	2387.76	8554.10
41 1/2"	34910.0	13098.0	2450.46	8776.10
42"	35978.0	13433.0	2513.94	9000.10
42 1/2"	37070.0	13772.0	2578.20	9226.10
43"	38186.0	14115.0	2643.24	9454.10
43 1/2"	39326.0	14462.0	2709.06	9684.10
44"	40490.0	14813.0	2775.66	9916.10
44 1/2"	41678.0	15168.0	2843.04	10150.10
45"	42890.0	15527.0	2911.20	10386.10
45 1/2"	44126.0	15890.0	2980.14	10624.10
46"	45386.0	16257.0	3050.86	10864.10
46 1/2"	46670.0	16628.0	3122.36	11106.10
47"	47978.0	17003.0	3194.64	11350.10
47 1/2"	49310.0	17382.0	3267.70	11596.10
48"	50666.0	17765.0	3341.54	11844.10
48 1/2"	52046.0	18152.0	3416.16	12094.10
49"	53450.0	18543.0	3491.56	12346.10
49 1/2"	54878.0	18938.0	3567.74	12600.10
50"	56330.0	19337.0	3644.70	12856.10
50 1/2"	57806.0	19740.0	3722.44	13114.10
51"	59306.0	20147.0	3800.96	13374.10
51 1/2"	60830.0	20558.0	3880.26	13636.10
52"	62378.0	20973.0	3960.34	13900.10
52 1/2"	63950.0	21392.0	4041.20	14166.10
53"	65546.0	21815.0	4122.84	14434.10
53 1/2"	67166.0	22242.0	4205.26	14704.10
54"	68810.0	22673.0	4288.46	14976.10
54 1/2"	70478.0	23108.0	4372.44	15250.10
55"	72170.0	23547.0	4457.20	15526.10
55 1/2"	73886.0	23990.0	4542.74	15804.10
56"	75626.0	24437.0	4629.06	16084.10
56 1/2"	77390.0	24888.0	4716.16	16366.10
57"	79178.0	25343.0	4804.04	16650.10
57 1/2"	80990.0	25802.0	4892.70	16936.10
58"	82826.0	26265.0	4982.14	17224.10
58 1/2"	84686.0	26732.0	5072.36	17514.10
59"	86570.0	27203.0	5163.36	17806.10
59 1/2"	88478.0	27678.0	5255.14	18100.10
60"	90410.0	28157.0	5347.70	18396.10
60 1/2"	92366.0	28640.0	5441.04	18694.10
61"	94346.0	29127.0	5535.16	18994.10
61 1/2"	96350.0	29618.0	5630.06	19296.10
62"	98378.0	30113.0	5725.74	19600.10
62 1/2"	100430.0	30612.0	5822.20	19906.10
63"	102506.0	31115.0	5919.44	20214.10
63 1/2"	104606.0	31622.0	6017.46	20524.10
64"	106730.0	32133.0	6116.26	20836.10
64 1/2"	108878.0	32648.0	6215.84	21150.10
65"	111050.0	33167.0	6316.20	21466.10
65 1/2"	113246.0	33690.0	6417.34	21784.10
66"	115466.0	34217.0	6519.26	22104.10
66 1/2"	117710.0	34748.0	6621.96	22426.10
67"	119978.0	35283.0	6725.44	22750.10
67 1/2"	122270.0	35822.0	6829.70	23076.10
68"	124586.0	36365.0	6934.74	23404.10
68 1/2"	126926.0	36912.0	7040.56	23734.10
69"	129290.0	37463.0	7147.16	24066.10
69 1/2"	131678.0	38018.0	7254.54	24400.10
70"	134090.0	38577.0	7362.70	24736.10
70 1/2"	136526.0	39140.0	7471.64	25074.10
71"	138986.0	39707.0	7581.36	25414.10
71 1/2"	141470.0	40278.0	7691.86	25756.10
72"	143978.0	40853.0	7803.14	26100.10
72 1/2"	146510.0	41432.0	7915.20	26446.10
73"	149066.0	42015.0	8028.04	26794.10
73 1/2"	151646.0	42602.0	8141.66	27144.10
74"	154250.0	43193.0	8256.06	27496.10
74 1/2"	156878.0	43788.0	8371.24	27850.10
75"	159530.0	44387.0	8487.20	28206.10
75 1/2"	162206.0	44990.0	8603.94	28564.10
76"	164906.0	45597.0	8721.46	28924.10
76 1/2"	167630.0	46208.0	8839.76	29286.10







**FOUNDATION PLAN NOTES:**

1. TOP OF ALL FOUNDATIONS MUST BE CONSTRUCTED AT ONE COMMON ELEVATION (COORDINATE WITH SITE PLANS - NOT BY POLYGON)
2. ALL FOUNDATIONS MUST BE CENTERED UNDER COLUMNS (UNO).
3. SEE SHEET RAM-11 FOR CONCRETE REINFORCING.
4. FOUNDATION WORKING AND CASTING FOUNDATIONS. REVIEW FOUNDATION PLAN FOR REQUIRED ORIENTATION.
5. FOUNDATION MARKER AND INSTALLATION NOT BY POLYGON.
6. VIBRATE CONCRETE FULL DEPTH OF FOUNDATION.

STATE APPROVALS SITE  
 APP: 04-120844-INC  
 REV: 01 OF THE STATE ARCHITECT  
 REVIEWED FOR: [ ] FILED [ ] ACS [ ]  
 DATE: 08/28/2021

GHD  
 628 PLAZA COLLEEN GARDNER  
 BERKELEY, CA 94702

PORTER  
 ARCHITECTS  
 1000 MARKET STREET  
 SAN FRANCISCO, CA 94102

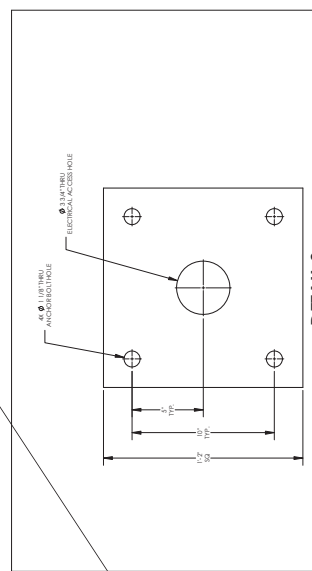
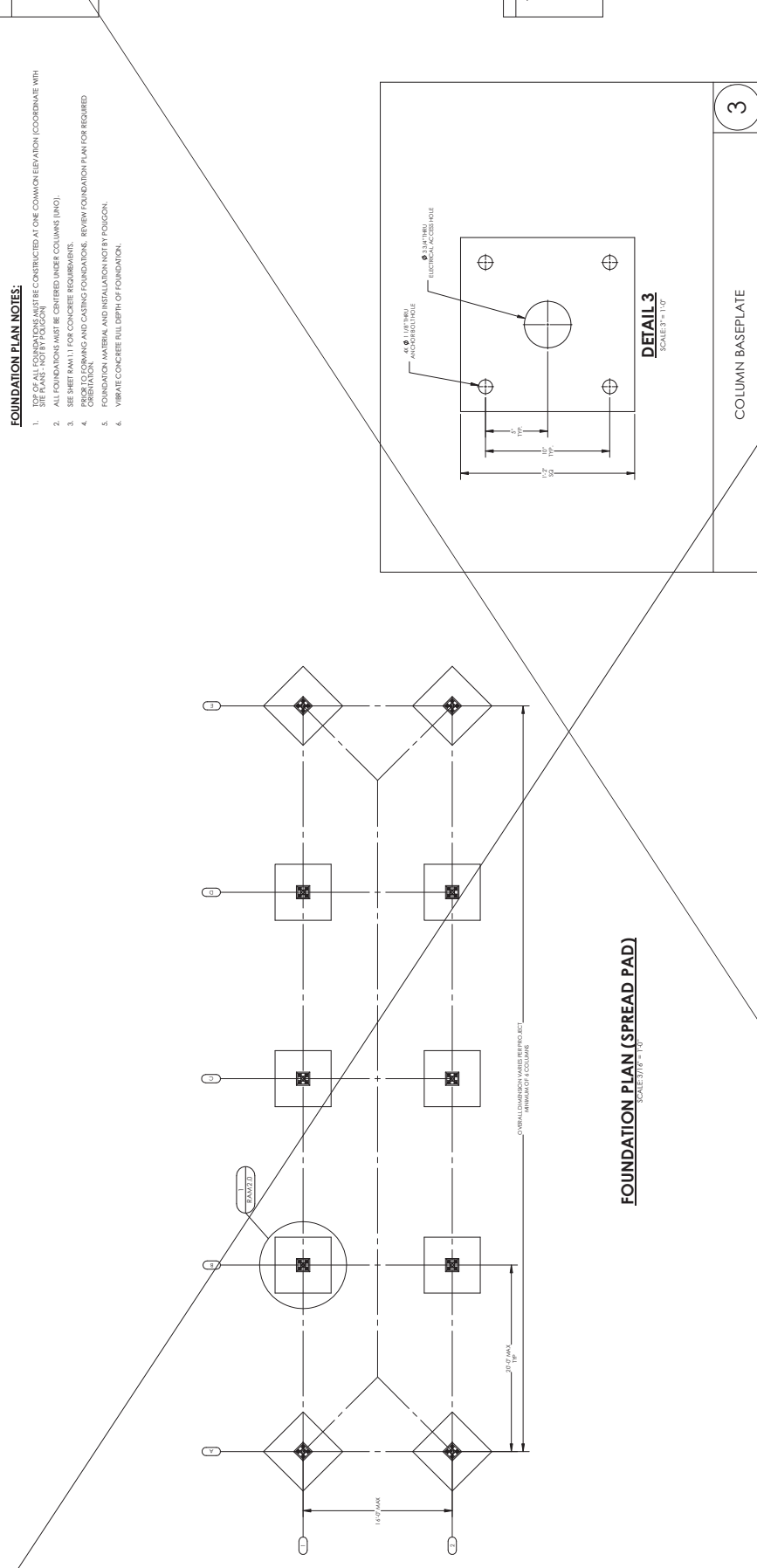


STATE APPROVALS-PC  
 IDENTIFICATION STAMP  
 OF THE STATE ARCHITECT  
 APP: 04-120844-INC  
 REV: 01 OF THE STATE ARCHITECT  
 REVIEWED FOR: [ ] FILED [ ] ACS [ ]  
 DATE: 07/28/2021

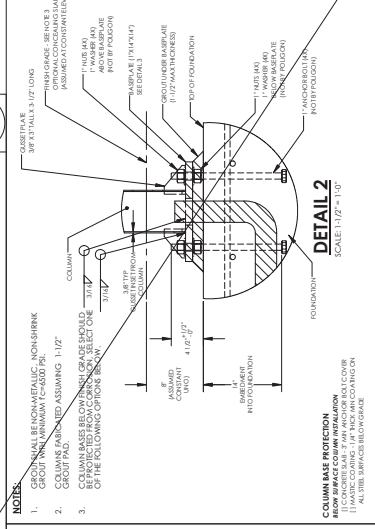
PRE-CHECK (PC)  
 DOCUMENT  
 CODE: 2019 CBC  
 A SEPARATE PROJECT  
 APPLICATION FOR  
 CONSTRUCTION IS REQUIRED.

FOUNDATION PLAN  
 SPREAD PAD  
 HIP ROOF - RAM 20

RAM.2.0



COLUMN BASEPLATE

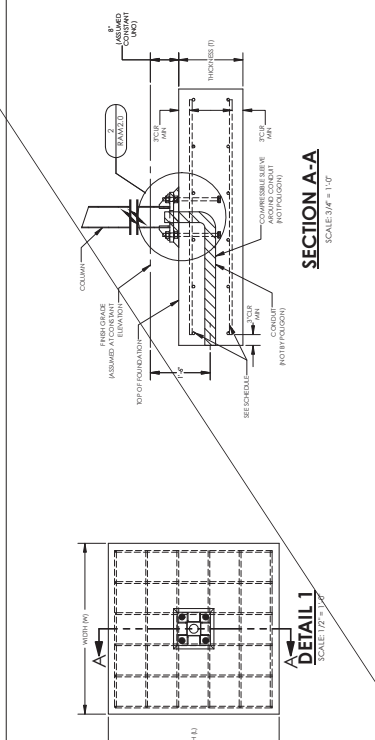


COLUMN BASEPLATE AND ANCHOR BOLTS

SEE SHEET RAM-10 FOR REQUIRED LOAD SCENARIO AND FOUNDATION TYPE (STEP 5 OF INSTRUCTIONS)  
 ONLY REFERENCE COPY OF PC DRAWINGS SUBMITTED FOR THIS PROJECT

LOAD SCENARIO	SPREAD PAD			
	WIDTH (W)	LENGTH (L)	THICKNESS (T)	HORIZONTAL REINFORCING <sup>1</sup>
1	7'-6"	7'-6"	1'-6"	7 #6
2	8'-0"	8'-0"	1'-6"	7 #6

<sup>1</sup>EQUALLY SPACED EACH WAY, TOP AND BOTTOM



SPREAD PAD FOUNDATION

SECTION A-A  
 SCALE: 3/4" = 1'-0"

DETAIL 1  
 SCALE: 1/2" = 1'-0"

DETAIL 2  
 SCALE: 1/2" = 1'-0"

DETAIL 3  
 SCALE: 3/4" = 1'-0"

NOTES:

1. GROUT SHALL BE NON-METALLIC, NON-SHRINK 38" X 13" TALL X 3/12" LONG
2. COLUMNS SHALL BE CONCRETE, UNLESS OTHERWISE NOTED
3. COLUMNS SHALL BE CONCRETE, UNLESS OTHERWISE NOTED















STATE APPROVALS SITE  
 DIV. OF THE STATE ARCHITECT  
 APP: 04-120844 INC.  
 REVIEWED FOR:  SFC  FLS  ACS   
 DATE: 08/28/2021

GHD  
 628 PLAZA DRIVE, SUITE 200  
 KIRBY PARK, CA 95022

PORTER  
 ARCHITECTS  
 1200 CALIFORNIA STREET  
 SAN FRANCISCO, CA 94109

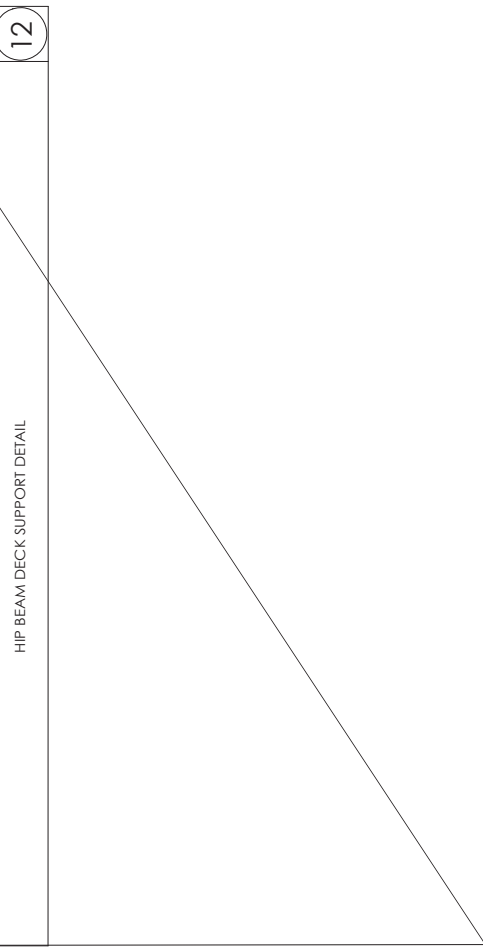
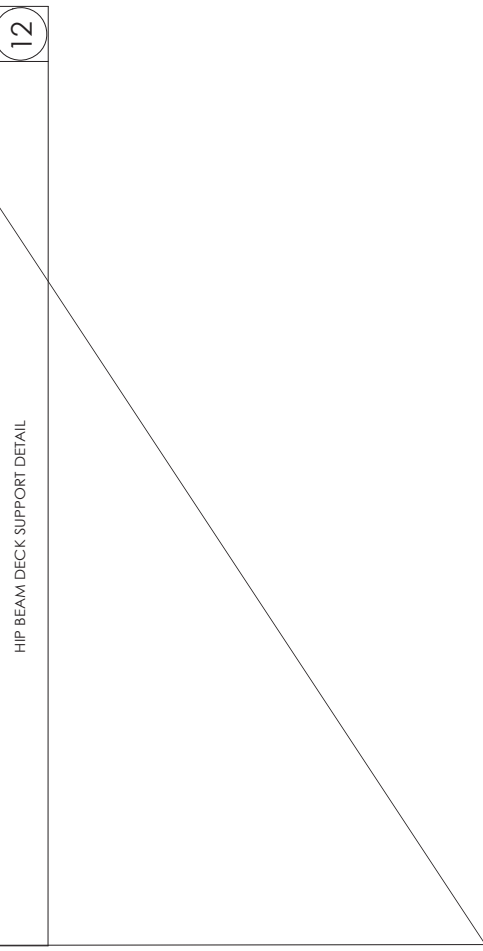
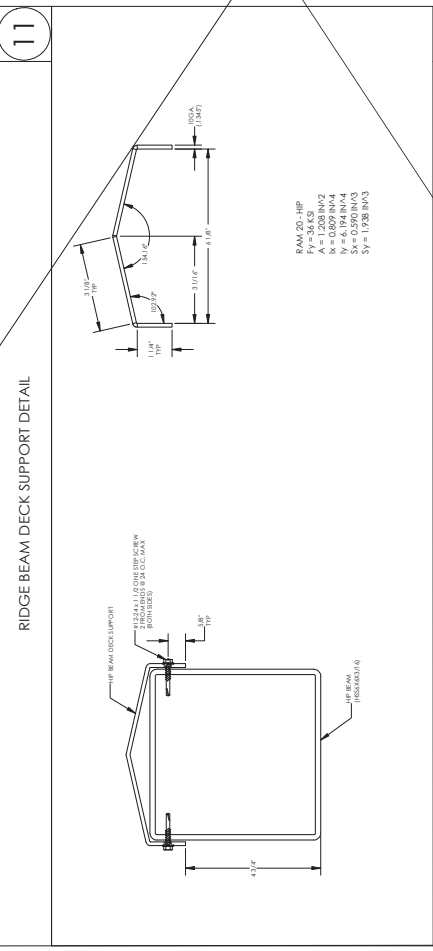
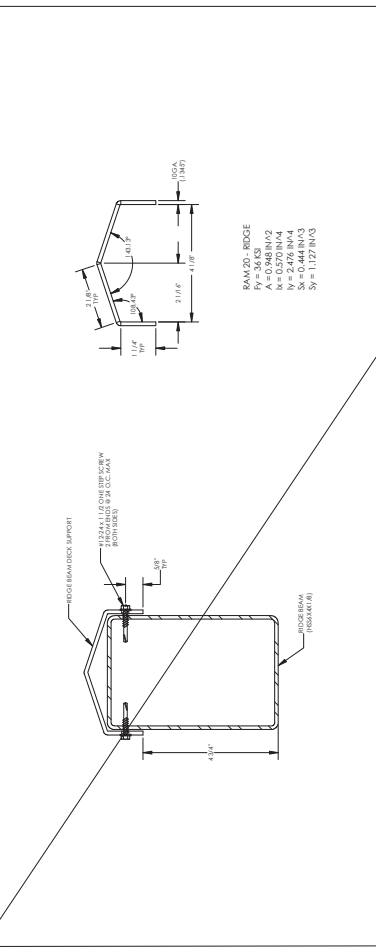


STATE APPROVALS PC  
 IDENTIFICATION NUMBER  
 DIV. OF THE STATE ARCHITECT  
 APP: 02-18077 PC  
 REVIEWED FOR:  SFC  FLS  ACS   
 DATE: 07/22/2021

PRE-CHECK (PC)  
 DOCUMENT  
 CODE: 2019 CBC  
 A SEPARATE PROJECT  
 APPLICATION FOR  
 CONSTRUCTION IS REQUIRED.

SECTION DETAILS  
 HIP ROOF - RAM 20

RAM4.1





STATE APPROVALS SITE  
 DIV. OF THE STATE ARCHITECT  
 APP: 04-120844 INC.  
 REVIEWED FOR:  SFC  FLS  ACS  DC  
 DATE: 08/22/2021

GHD  
 658 PLAZA DRIVE, SUITE 200  
 CRESTVIEW, CA 95626  
 916.438.2200

PORTER  
 ARCHITECTS  
 1000 CALIFORNIA STREET  
 SUITE 100  
 OAKLAND, CA 94612  
 415.778.8800



STATE APPROVALS PC  
 IDENTIFICATION NUMBER  
 DIV. OF THE STATE ARCHITECT  
 APP: 04-120844 PC  
 REVIEWED FOR:  SFC  FLS  ACS  DC  
 DATE: 07/22/2021

PRE-CHECK (PC)  
 DOCUMENT  
 CODE: 2019 CBC  
 A SEPARATE PROJECT  
 APPLICATION FOR  
 CONSTRUCTION IS REQUIRED.

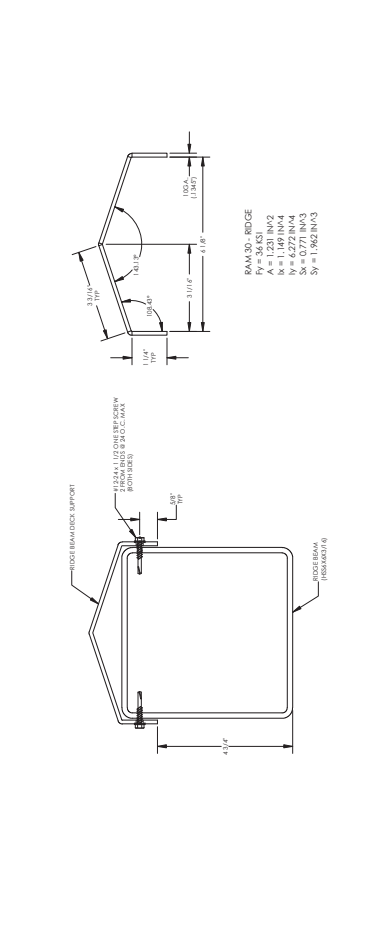
SECTION DETAILS  
 HIP ROOF - RAM 30

RAM4.3



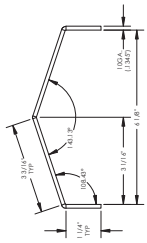
11

RIDGE BEAM DECK SUPPORT DETAIL

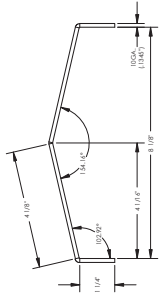


12

HIP BEAM DECK SUPPORT DETAIL



RAM 30 - RIDGE  
 Fy = 36 KSI  
 Fv = 1.92 IN/3  
 Ax = 1.49 IN/4  
 Ay = 4.77 IN/4  
 Sx = 1.962 IN/3  
 Sy = 1.962 IN/3



RAM 30 - HIP  
 Fy = 36 KSI  
 Fv = 1.92 IN/3  
 Ax = 1.24 IN/4  
 Ay = 1.23 IN/4  
 Sx = 2.843 IN/3  
 Sy = 2.843 IN/3

RAMS.0

ARCHITECTURAL  
VIEWS

HIP ROOF - RAM 20

PRE-CHECK (PC)  
DOCUMENT  
CODE: 2019 CBC  
A SEPARATE PROJECT  
APPLICATION FOR  
CONSTRUCTION IS REQUIRED.

IDENTIFICATION NUMBER  
OF THE STATE ARCHITECT  
APP: 02-18077-PC  
REGISTERED ARCHITECT  
NO. 02-18077-06  
DATE: 07/22/2021

STATE APPROVALS/PC

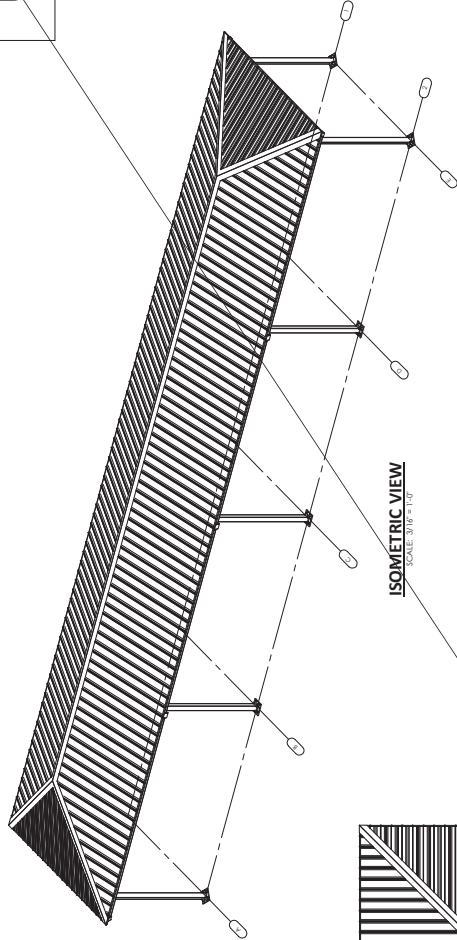


PORTER  
ARCHITECTS  
P.C.

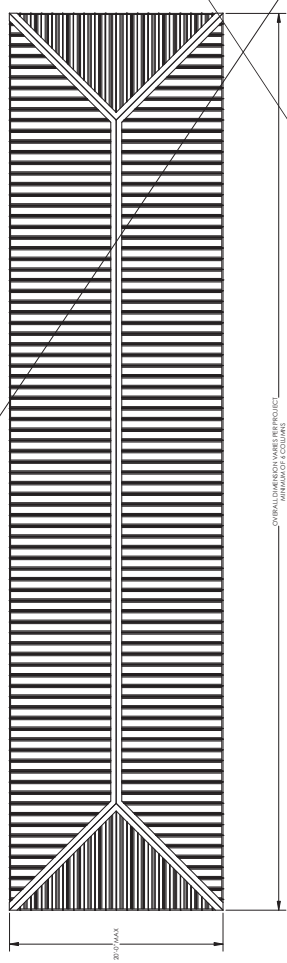


GHD  
608 PLAZA, SUITE 200, COSTA MESA, CA 92626  
TEL: 714.440.1600  
WWW.GHD.COM

STATE APPROVALS/SITE  
REVIEWED FOR:  
APP: 04-120844-INC  
DIV. OF THE STATE ARCHITECT  
NO. 04-120844-01  
DATE: 08/03/2022

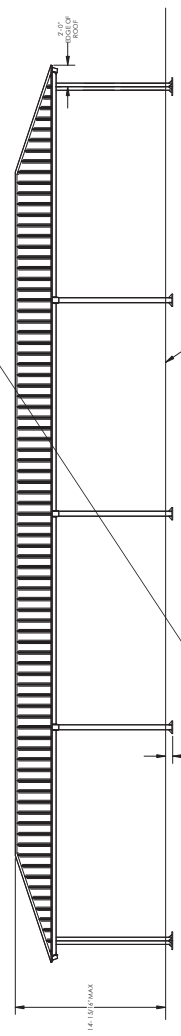


ISOMETRIC VIEW  
SCALE: 3/16\"/>

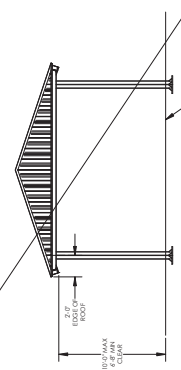


PLAN VIEW  
SCALE: 3/16\"/>

OVERALL DIMENSIONS ARE PER PROJECT  
MEMORANDUM OF ACCORDS.



FRONT ELEVATION  
SCALE: 3/16\"/>



SIDE ELEVATION  
SCALE: 3/16\"/>

STATE APPROVALS

IDENTIFICATION STAMP  
DIVISION OF THE STATE ARCHITECT  
APP: 02-18077-PC  
PROJECT NO: 18077-00  
DATE: 07/22/2021



**poligon**  
POLYMER  
CONCRETE

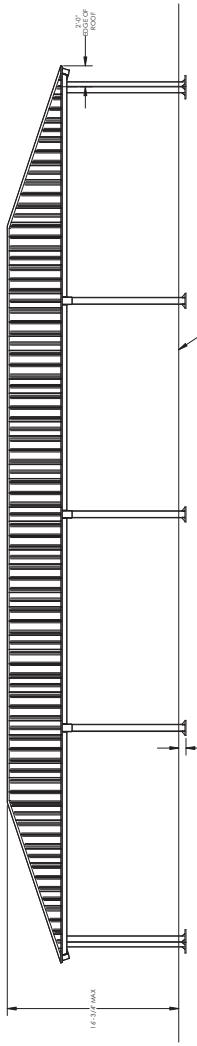
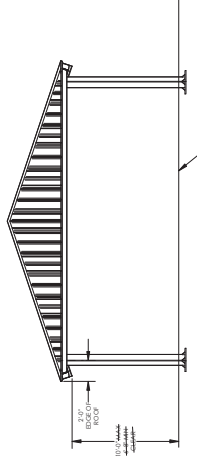
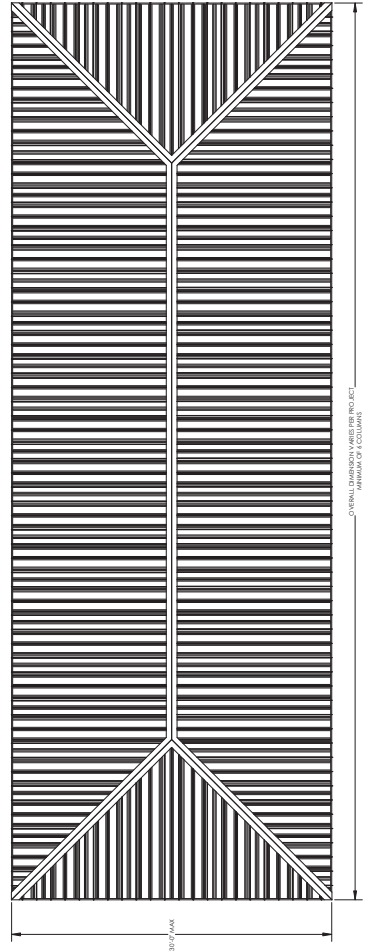
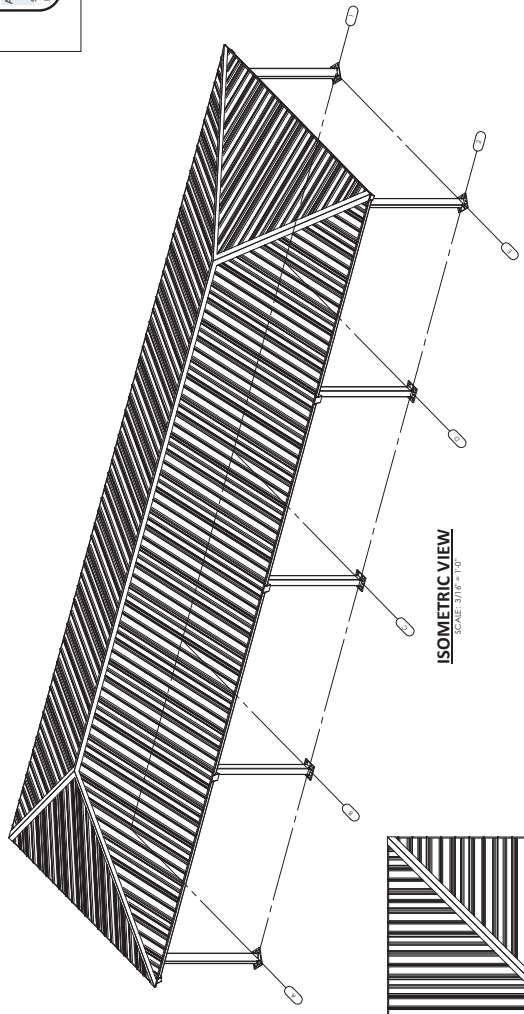
**GHD**  
658 PLAZA, OAKLAND, CA 94612  
SAN FRANCISCO, CA 94102

STATE APPROVALS

REVIEWED FOR:  
APP: 04-120844-INC  
DIVISION OF THE STATE ARCHITECT

DATE: 08/03/2022

SCALE: 3/16" = 1'-0"





STATE APPROVALS SHEET  
 DIV. OF THE STATE ARCHITECT  
 APP: 04-120844-INC.  
 REVIEWED FOR: [ ] FILED [ ] ACS [ ]  
 DATE: 08/22/2024

GHD  
 658 PLYMOUTH CALIFORNIA CIRCLE  
 FLEMING, CA 95021  
 (916) 434-1000

poligon  
 PORTER  
 1000 PORTER DRIVE  
 SAN FRANCISCO, CA 94103  
 (415) 774-1000

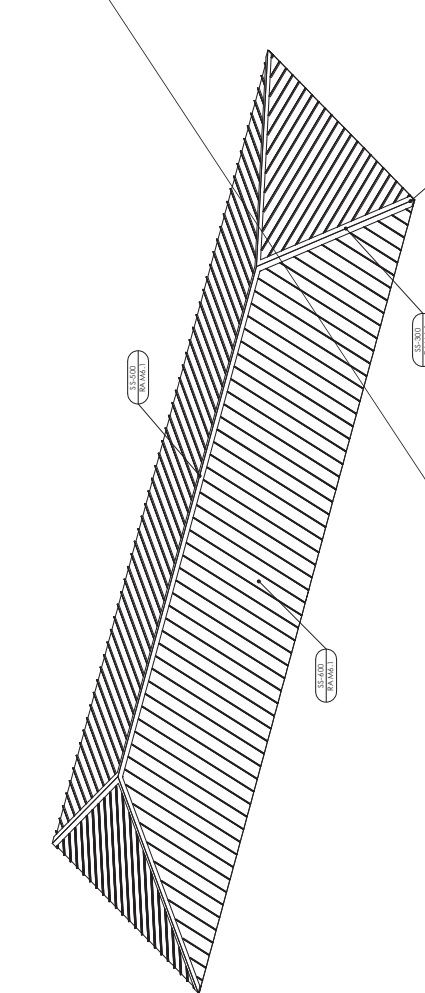


STATE APPROVALS-PC  
 IDENTIFICATION NUMBER: 04-120844-INC-001  
 DATE: 07/22/2024

PRE-CHECK (PC)  
 DOCUMENT  
 CODE: 2019 CBC  
 A SEPARATE PROJECT  
 APPLICATION FOR  
 CONSTRUCTION IS REQUIRED.

ROOF CONNECTION  
 DETAILS  
 HIP ROOF - RAM

RAM6.1



ISOMETRIC VIEW  
 SCALE: 1/4" = 1'-0"

**STANDING SEAM INSTALLATION NOTES:**

1. THE CONTRACTOR SHALL BE RESPONSIBLE FOR THE PROPER INSTALLATION OF THE STANDING SEAM PANELS AND TO ENSURE THAT THE PANELS ARE INSTALLED IN ACCORDANCE WITH THE MANUFACTURER'S INSTALLATION INSTRUCTIONS. THE CONTRACTOR SHALL BE RESPONSIBLE FOR THE PROPER INSTALLATION OF THE STANDING SEAM PANELS AND TO ENSURE THAT THE PANELS ARE INSTALLED IN ACCORDANCE WITH THE MANUFACTURER'S INSTALLATION INSTRUCTIONS.

2. THE CONTRACTOR SHALL BE RESPONSIBLE FOR THE PROPER INSTALLATION OF THE STANDING SEAM PANELS AND TO ENSURE THAT THE PANELS ARE INSTALLED IN ACCORDANCE WITH THE MANUFACTURER'S INSTALLATION INSTRUCTIONS.

3. THE CONTRACTOR SHALL BE RESPONSIBLE FOR THE PROPER INSTALLATION OF THE STANDING SEAM PANELS AND TO ENSURE THAT THE PANELS ARE INSTALLED IN ACCORDANCE WITH THE MANUFACTURER'S INSTALLATION INSTRUCTIONS.

4. THE CONTRACTOR SHALL BE RESPONSIBLE FOR THE PROPER INSTALLATION OF THE STANDING SEAM PANELS AND TO ENSURE THAT THE PANELS ARE INSTALLED IN ACCORDANCE WITH THE MANUFACTURER'S INSTALLATION INSTRUCTIONS.

5. THE CONTRACTOR SHALL BE RESPONSIBLE FOR THE PROPER INSTALLATION OF THE STANDING SEAM PANELS AND TO ENSURE THAT THE PANELS ARE INSTALLED IN ACCORDANCE WITH THE MANUFACTURER'S INSTALLATION INSTRUCTIONS.

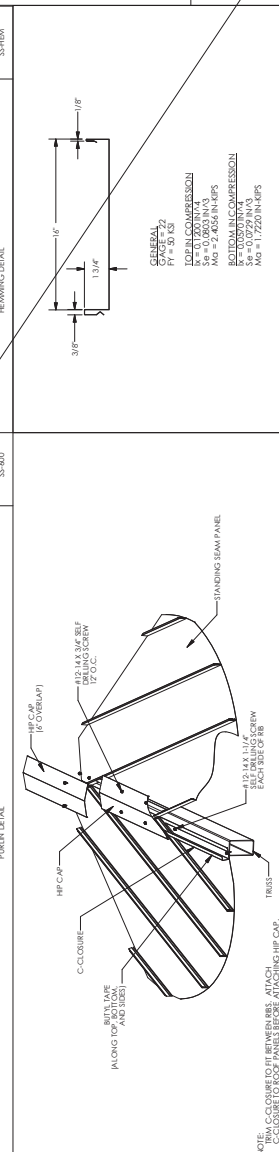
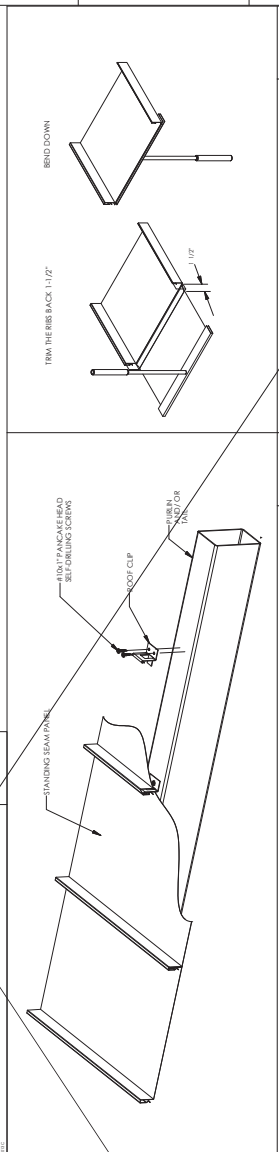
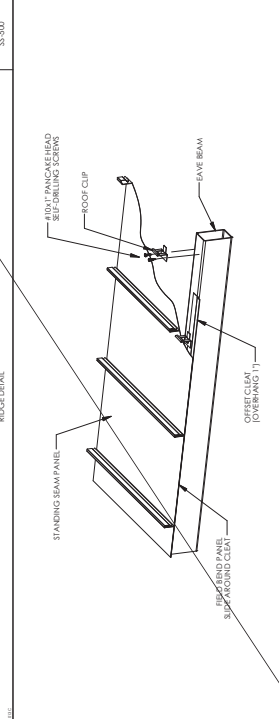
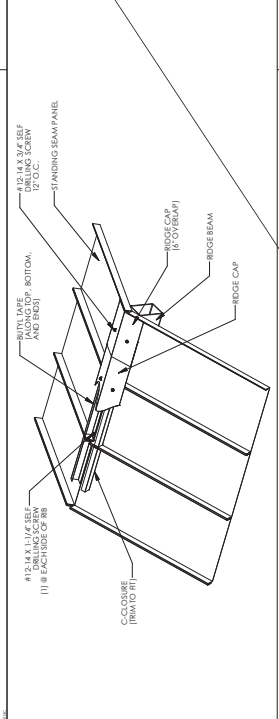
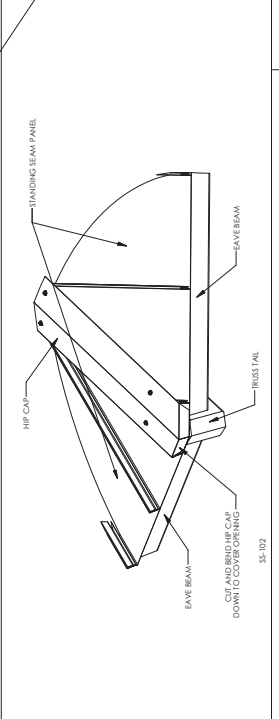
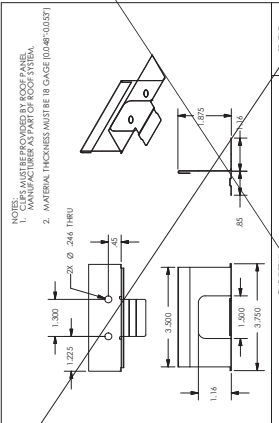
6. THE CONTRACTOR SHALL BE RESPONSIBLE FOR THE PROPER INSTALLATION OF THE STANDING SEAM PANELS AND TO ENSURE THAT THE PANELS ARE INSTALLED IN ACCORDANCE WITH THE MANUFACTURER'S INSTALLATION INSTRUCTIONS.

7. THE CONTRACTOR SHALL BE RESPONSIBLE FOR THE PROPER INSTALLATION OF THE STANDING SEAM PANELS AND TO ENSURE THAT THE PANELS ARE INSTALLED IN ACCORDANCE WITH THE MANUFACTURER'S INSTALLATION INSTRUCTIONS.

8. THE CONTRACTOR SHALL BE RESPONSIBLE FOR THE PROPER INSTALLATION OF THE STANDING SEAM PANELS AND TO ENSURE THAT THE PANELS ARE INSTALLED IN ACCORDANCE WITH THE MANUFACTURER'S INSTALLATION INSTRUCTIONS.

9. THE CONTRACTOR SHALL BE RESPONSIBLE FOR THE PROPER INSTALLATION OF THE STANDING SEAM PANELS AND TO ENSURE THAT THE PANELS ARE INSTALLED IN ACCORDANCE WITH THE MANUFACTURER'S INSTALLATION INSTRUCTIONS.

10. THE CONTRACTOR SHALL BE RESPONSIBLE FOR THE PROPER INSTALLATION OF THE STANDING SEAM PANELS AND TO ENSURE THAT THE PANELS ARE INSTALLED IN ACCORDANCE WITH THE MANUFACTURER'S INSTALLATION INSTRUCTIONS.



SECTION	DESCRIPTION	SCALE
SS-102	CORNER DETAIL	1/4" = 1'-0"
SS-103	CLIP DETAIL	1/4" = 1'-0"
SS-104	STANDING SEAM PANEL	1/4" = 1'-0"
SS-105	HIP ROOF CONNECTION	1/4" = 1'-0"
SS-106	ROOF DECK SECTION PROPERTIES	1/4" = 1'-0"

STATE APPROVALS SITE  
 DIV. OF THE STATE ARCHITECT  
 APP: 04-120844 INC.  
 REVIEWER FOR: [ ]  
 SHEET NO. [ ] FILE NO. [ ] ACS [ ]  
 DATE: 08/22/2024

GHD  
 4055 PAVANIA DRIVE, SUITE 100  
 COSTA MESA, CA 92626  
 949.261.1918

PORTER  
 PORTER & PORTER  
 ARCHITECTS  
 1000 AVENUE OF THE STARS  
 SUITE 1000  
 COSTA MESA, CA 92626  
 949.440.1100



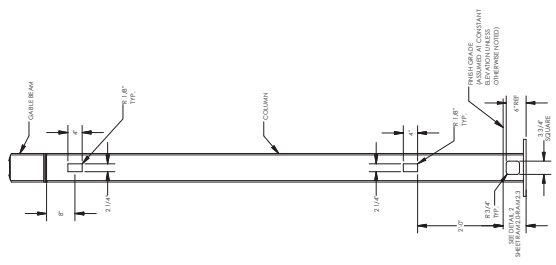
STATE APPROVALS PC  
 IDENTIFICATION NUMBER  
 DIV. OF THE STATE ARCHITECT  
 APP: 02-119077 PC  
 REVIEWER FOR: [ ]  
 SHEET NO. [ ] FILE NO. [ ] CS [ ]  
 DATE: 07/22/2024

PRE-CHECK (PC)  
 DOCUMENT  
 CODE: 2019 CBC  
 A SEPARATE PROJECT  
 APPLICATION FOR  
 CONSTRUCTION IS REQUIRED.

MISC DESIGN  
 OPTIONS  
 HIP ROOF - RAM

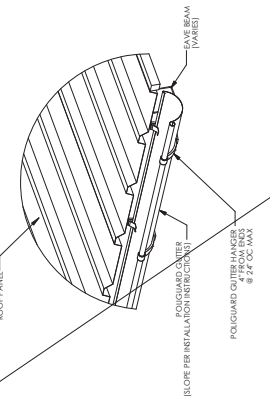
RAM 7.0

**ELECTRICAL CUTOUIT NOTES:**  
 1. MAXIMUM ONE CUTOUIT PERMITTED IN EACH MEMBER.  
 2. CUTOUIS CAN BE PLACED ON ANY SIDE OF A MEMBER.  
 3. CUTOUIS CAN BE PLACED ALONG MEMBER AS INDICATED IN THE DETAILS.  
 4. ALL CUTOUIS MUST BE MARKUP APPROVED/PC DRAWINGS TO LOCATE CUTOUIS FOR APPROVAL AND FABRICATION.

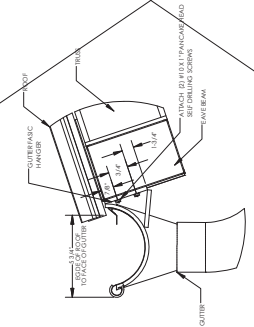


ELECTRICAL CUTOUIT IN COLUMNS  
 EC-100

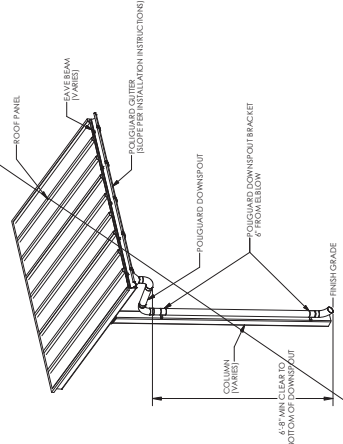
**POLIGUARD GUTTER SYSTEM NOTES:**  
 1. PREFABRICATED GUTTER SYSTEMS ATTACHED TO THE STRUCTURE AFTER ROOF IS INSTALLED.  
 2. DETAILED INSTALLATION INSTRUCTIONS ARE SHIPPED WITH THE STRUCTURE.  
 3. DOWNSPOUTS REQUIRED AT EACH COLUMN.



GUTTER DETAIL  
 GS-100



GUTTER DETAIL  
 GS-200



DOWNSPOUT DETAIL  
 GS-300



**ELECTRICAL CUTOUT AND ACCESS INSTRUCTIONS**

- IF YES IS NOT SELECTED IN STEP 2 ON ORDER FORM, THEN THIS SHEET NEED NOT BE INCLUDED IN SITE SPECIFIC DRAWINGS
- ONLY COLUMNS ARE PERMITTED TO HAVE ELECTRICAL ACCESS
- THE COLUMN CUTOUTS ARE STATIC AND SHOWN IN THE 'MISC DESIGN OPTIONS SHEET' ISOMERIC FRAME VIEW TO THE RIGHT
- IDENTIFY THE COLUMNS WITH ELECTRICAL CUTOUTS BELOW (REFERENCE GRID LINES IN ISOMERIC FRAME VIEW TO THE RIGHT)
- STRUCTURES MAY BE LONGER OR SHORTER THAN THE ISOMERIC FRAME VIEW SHOWN
- IF SITE SPECIFIC STRUCTURE HAS A DIFFERENT NUMBER OF COLUMNS THAN ISOMERIC SHOWN, REFERENCE COLUMN A1 IN THE ISOMERIC VIEW AND CONTINUE PATTERN TO FIT THE SPECIFIC LAYOUT
- IF NO COLUMNS ARE IDENTIFIED, POLYGON WILL ASSUME CUTOUTS ONLY IN COLUMN A1
- CONTACT POLYGON ENGINEERING FOR SPECIAL PROJECT SPECIFIC REQUIREMENTS

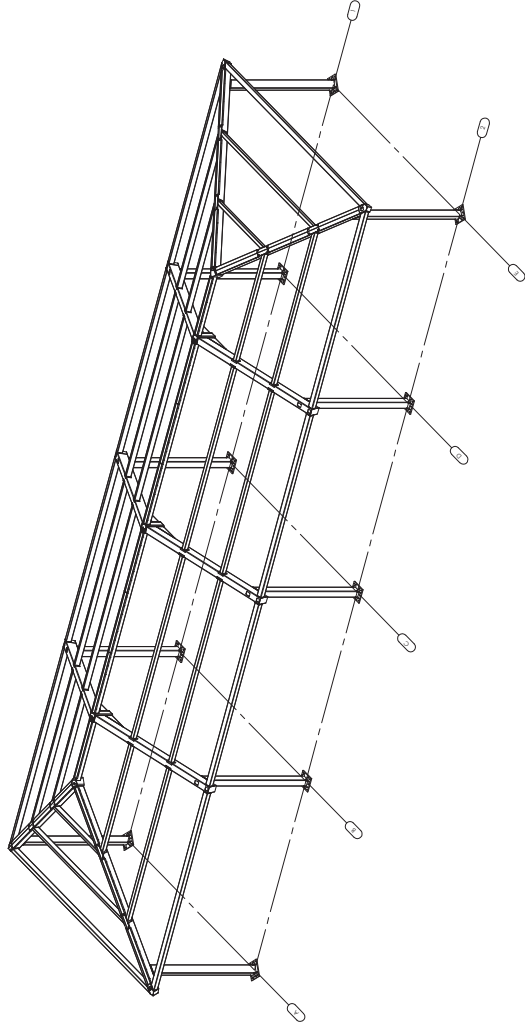
**ELECTRICAL CUTOUT IDENTIFICATION IN COLUMNS**

SPECIFIC MEMBERS \_\_\_\_\_

**EXAMPLE:**

**ELECTRICAL CUTOUT IDENTIFICATION IN COLUMNS**

SPECIFIC MEMBERS \_\_\_\_\_ A.1., B.1., F.1.



STATE APPROVALS SITE  
 IDENTIFICATION STAMP  
 DIV. OF THE STATE ARCHITECT  
 APP: 04-120844 INC.  
 REVIEWED FOR: \_\_\_\_\_  
 SIGNED: \_\_\_\_\_  
 DATE: 08/28/2024

GHD  
 628 PLAZA, OAKLAND, CA 94612  
 415.778.4500  
 WWW.GHD.COM

THE PORTER GROUP  
 1000 CALIFORNIA STREET, SUITE 100  
 OAKLAND, CA 94612

STATE APPROVALS PC  
 IDENTIFICATION STAMP  
 DIV. OF THE STATE ARCHITECT  
 APP: 02-119077 PC  
 REVIEWED FOR: \_\_\_\_\_  
 SIGNED: \_\_\_\_\_  
 DATE: 07/29/2024

PRE-CHECK (PC)  
 DOCUMENT  
 CODE: 2019 CBC  
 A SEPARATE PROJECT APPLICATION FOR CONSTRUCTION IS REQUIRED.

ELECTRICAL CUTOUTS  
 HIP ROOF - RAM

RAM7.1